

RETIO

Your Complete Visual Communication Display Guide

#1 Roller Banners

#13 Tension Banners

#25 Flags

#33 Outdoor

#45 POS Signage

#61 Counters

#73 Backwalls

#93 Accessories

#103 Stands

Display solutions are one of the most popular and impactful visual communication media on the market.

Whether it is for frequent and regular use or for a durable fixed arrangement, a multitude of solutions exists and for any budget.

To successfully communicate your messages and brand at point of sale, shows and events it is essential to understand:

- The environment in which the display will be exhibited.
- Whether the display will be renewed and how frequently.
- The quality appropriate to the event and relative to the desired budget.
- How to accessorise the product to increase its functionality.
- How to stand out from the competition with high-end, original solutions that distinguish your brand from the competition.

This comprehensive guide offers you a wide choice of products. We will help you find the best solution suited to your needs.



New product



Custom size available



Best seller



Made in Europe



1 Year hardware guarantee



Use with fabric graphic



5 Year hardware guarantee



Use with PVC graphic



Lifetime hardware guarantee



Use with self-adhesive graphic



Comes with a bag



Use with rigid panel graphic



Direct printing onto hardware

Roller Banners

Simple, striking, stylish – banners are still one of the most popular, effective and easy ways to promote your business and get your message across in a wide variety of environments.

With one of the most comprehensive ranges on the market, our banners are designed to suit every budget and fit all situations. From single to frequent use and if you need it, the ability to change your graphics.



Roller Banners are one of the most popular and effective communication tools available.

Using our solutions will exceed your expectations, whatever your needs may be, from desktop, retail outlets, exhibition stands to the office environment.

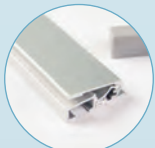
We have one of the widest ranges of both economy and premium Roller Banners on the market, with widths ranging from 600mm to 3000mm! It's therefore important to choose the right one for your needs. Here is a quick guide explaining what you should consider.



Before choosing your Roller Banner, ask yourself:

1. Where will it be positioned: indoors or outdoors?
2. How often will your banner be used- occasionally or daily?
3. How much space is available for the banner?
4. What is the right size to attract your audience? It is important to choose the right size without over-crowding your display area.
5. Will you need to change the graphic? - Are the messages consistent or will you need to alternate messages for different occasions or offers?
6. What is the right material for your needs? - Check the environment and select the right materials to meet your needs - banner vinyl, polyester or textile fabric.
7. What is your budget?

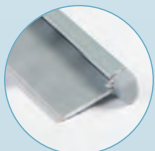
Top graphic rail attachments explained



Snap rail



Premium dual action self-adhesive and snap rail



Self-adhesive rail Breeze and Stellar only

We recommend using PVC media when using the adhesive rail.

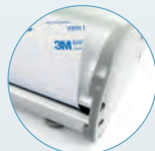
Base graphic attachment explained



Hook and loop strip



Cassette



Self-adhesive leader



Sliding system



Clip graphic fixing: lower fixing of the visual

If you need to change your graphic often then we recommend choosing the cassette banner system.

Transport bag types explained



Simple Nylon. Top opening



Nylon padded.



Premium EVA Semi rigid



Nylon with padded inner protection (double skin)



Padded nylon with side opening and foam reinforced ends



Revolution



Uniquely designed roller banner with revolutionary style and design. Gloss white plastic injected banner with dark grey plastic under carriage to give the appearance of floating when displayed.

- Material:** Injection moulded plastic
- Rail:** Snap rail with self-adhesive slider mechanism
- Pole:** White hybrid telescopic pole
- Leader:** Self-adhesive leader
- Graphic:** Single-sided
- Feet:** Adjustable
- Bag:** Premium EVA semi rigid

850 mm	UB161-850	📏 1630/2260 (h) x 900 (w) x 225 (d) mm
--------	-----------	--



White hybrid telescopic pole



Adjustable feet



Grey plastic ends and undercarriage



Snap rail with adhesive slider mechanism

Exclusive design



Ultra-durable EVA bag for better protection

Premium



Merlin



Interchangeable cassette with telescopic pole allows you to change graphics easily and quickly. Ability to store the old graphic in the cassette and re-use it later.

- Material:** Aluminium and plastic
- Rail:** Snap rail
- Pole:** Hybrid adjustable height telescopic pole
- Leader:** Cassette banner with adhesive leader
- Graphic:** Single-sided
- Feet:** Adjustable
- Sac :** Padded nylon with side opening and foam reinforced ends

850 mm	UB160-850-01	📏 1655/2315 (h) x 915 (w) x 195 (d) mm
1000 mm	UB160-1000-01	📏 1655/2315 (h) x 1065 (w) x 195 (d) mm

Accessories:

Replacement cassette - 850 mm	UB175-850-01
Replacement cassette - 1000 mm	UB175-1000-01

Original +



Adjustable height premium roller banner in a variety of sizes up to three meters. Can be made in black or to custom sizes at an additional cost. Also features a linear channel which accepts a variety of optional extra accessories for a multi-functional display.

- Material:** Aluminium and plastic
- Rail:** Premium dual action self-adhesive and snap rail with secure end caps
- Pole:** Hybrid adjustable height telescopic pole
- Leader:** Self-adhesive sliding leader
- Graphic:** Single-sided
- Feet:** Adjustable
- Sac :** Padded nylon with side opening and foam reinforced ends

600 mm	UB322-600C1	📏 1590/2230 (h) x 640 (w) x 195 (d) mm
800 mm	UB322-800C1	📏 1590/2230 (h) x 840 (w) x 195 (d) mm
1000 mm	UB322-1000C1	📏 1590/2230 (h) x 1040 (w) x 195 (d) mm
1200 mm*	UB322-1200C1	📏 1590/2230 (h) x 1240 (w) x 195 (d) mm
1500 mm*	UB322-1500C1	📏 1590/2230 (h) x 1540 (w) x 195 (d) mm
2000 mm*	UB322-2000C1	📏 1590/2230 (h) x 2040 (w) x 195 (d) mm
2400 mm**	UB322-2400C1	📏 1590/2230 (h) x 2440 (w) x 195 (d) mm
3000 mm**	UB322-3000C1	📏 1590/2230 (h) x 3040 (w) x 195 (d) mm

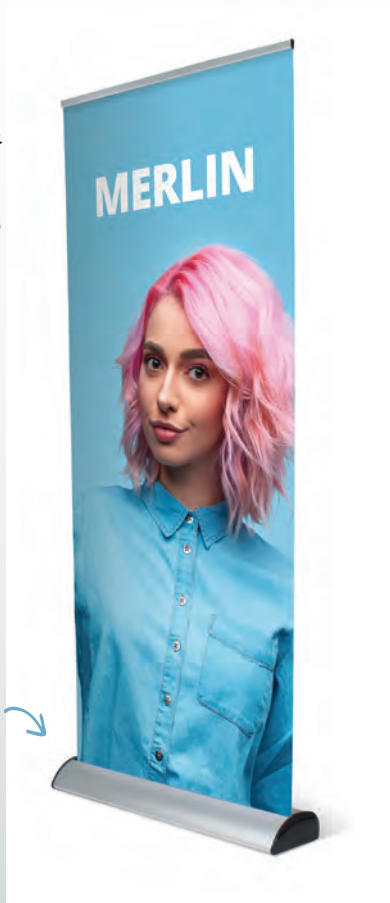
* Comes with 2 Poles ** Comes with 3 Poles

Graphics are easily updated using changeable cassettes



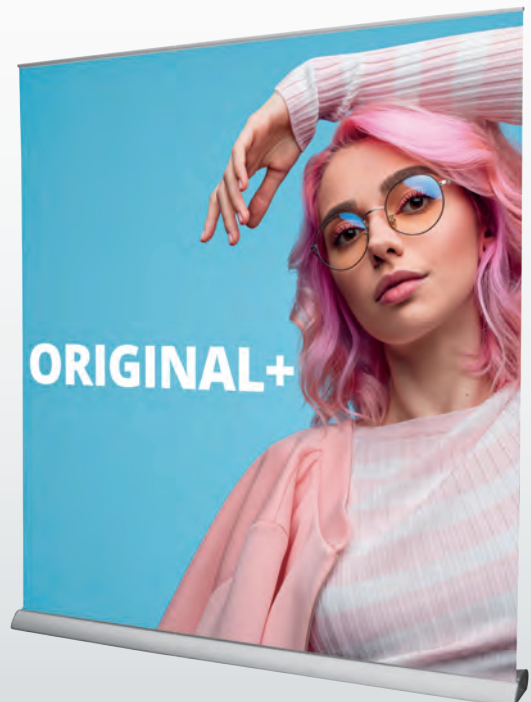
Change display in 30 seconds

Sleek and elegant design



Hybrid adjustable height telescopic pole

Available in eight sizes up to 3m wide



Accessorise Your Banner

Choose from our optional accessories to make your banner multi-functional and more visible.

Also compatible with Original+ and Excaliber2 roller banners.

More than just a roller banner



Leaflet holders available



Frame attaches securely to the banner base



Mix and match your multiple accessories

Shelf post	LNBA-02
Shelf only	LNBA-PT1
Leaflet Holders A4 + crossbar	LNBA-01
Leaflet Holders A4	LN112-C
iPad/LCD Screen mount*	LNBA-03



Steel leaflet holder



Screen mount for LCD screen or iPad*



Shelving

*LCD screen and iPad are not included and not available to purchase. LCD mount available on Excaliber2 banners only - 5kg max screen weight.

Standard

Orient +



Front-loading graphic that pulls up from the front of the base ensuring your brand message has maximum visibility from floor to rail. Market leading roller banner. The optional low profile hook/loop fixing allows for quick change graphics.

- Material:** Aluminium and plastic
- Rail:** Premium dual action self-adhesive and snap rail with secure end caps
- Pole:** Hybrid adjustable height telescopic pole
- Leader:** Self-adhesive sliding leader, optional hook and loop strip
- Graphic:** Single-sided
- Feet:** Adjustable
- Bag:** Padded nylon with side opening and foam reinforced ends

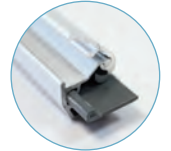
800 mm	WH353-800-003	📏	1595/2220 (h) x 840 (w) x 185 (d) mm
850 mm	WH353-850-003	📏	1595/2220 (h) x 890 (w) x 185 (d) mm
1000 mm	WH353-1000-003	📏	1595/2220 (h) x 1040 (w) x 185 (d) mm
1200 mm*	WH353-1200-003	📏	1595/2220 (h) x 1240 (w) x 185 (d) mm
1500 mm*	WH353-1500-003	📏	1595/2220 (h) x 1540 (w) x 185 (d) mm
2000 mm*	WH353-2000-003	📏	1595/2220 (h) x 2040 (w) x 185 (d) mm

NEW

* Comes with 2 Poles



Hybrid adjustable height telescopic pole



Premium dual action self-adhesive and snap rail

Snap rail with end caps



Delta Lite



Elegant aluminium banner with chrome finished end covers that combines great design with stability whilst remaining lightweight.

- Material:** Aluminium and plastic
- Rail:** Snap rail with end caps
- Pole:** Hybrid adjustable height telescopic pole
- Leader:** Self-adhesive
- Graphic:** Single-sided
- Feet:** Adjustable
- Bag:** Padded nylon

800 mm	UB205-800-004	📏	1625/2224 (h) x 853 (w) x 203 (d) mm
850 mm	UB205-850-004	📏	1625/2224 (h) x 903 (w) x 203 (d) mm
1000 mm	UB205-1000-004	📏	1625/2224 (h) x 1053 (w) x 203 (d) mm



Pioneer



The most economical mid-range roller banner on the market. Moulded polymers provide a glossy white finish and modern high-end finished look.

- Material:** Plastic base, aluminium pole / rail
- Rail:** Snap rail with end caps
- Pole:** Aluminium three-part bungee pole
- Leader:** Self-adhesive
- Graphic:** Single-sided
- Feet:** Adjustable
- Bag:** Padded nylon

800 mm	UB147-800	📏	2095 (h) x 845 (w) x 225 (d) mm
850 mm	UB147-850	📏	2095 (h) x 895 (w) x 225 (d) mm
1000 mm	UB147-1000	📏	2095 (h) x 1045 (w) x 225 (d) mm



Mosquito

Giant Mosquito and Mosquito banners offer classic styling with durability - ideal for any indoor environment. They come with a padded bag for protective transportation and are available in a large choice of sizes.

They continue to be two of the best selling roller banners on the market and great display solutions.



Mosquito



One of the most popular banners in its range with snap rail for quick and easy graphic assembly. Lightweight and easy to transport.

- Material:** Aluminium, plastic
- Rail:** Snap rail
- Pole:** Aluminium three-part bungee pole
- Leader:** Self-adhesive
- Graphic:** Single-sided
- Feet:** Twin, twist-out feet
- Bag:** Nylon with padded inner protection (double skin)

800 mm	UB197	⊗ 2105 (h) x 860 (w) x 285 (d) mm
850 mm	UB196	⊗ 2105 (h) x 910 (w) x 285 (d) mm
1000 mm	UB197-1000	⊗ 2105 (h) x 1060 (w) x 285 (d) mm
1200 mm*	UB197-1200	⊗ 2105 (h) x 1260 (w) x 285 (d) mm
1500 mm*	UB197-1500	⊗ 2105 (h) x 1560 (w) x 285 (d) mm
2000 mm*	UB197-2000	⊗ 2105 (h) x 2060 (w) x 285 (d) mm

* Comes with 2 poles

Accessorise your roller banner with powerspot LED lighting (PS800-LED)



With the optional clip graphic fixing it's simple and quick to change graphics

Three-part bungee pole

Available in six widths!

Giant Mosquito



All the advantages of the Mosquito roller banner but with the advantage of extending up to three meters high!

- Material:** Aluminium, plastic
- Rail:** Snap rail
- Pole:** Telescopic pole that can be set at various heights up to 3m
- Leader:** Self-adhesive
- Graphic:** Single-sided
- Feet:** Twin, twist-out feet
- Bag:** Nylon with padded inner protection (double skin)

850 mm	UB300-850	⊗ 1705/3100 (h) x 869 (w) x 400 (d) mm
1000 mm	UB300-1000	⊗ 1705/3100 (h) x 1019 (w) x 400 (d) mm
1500 mm*	UB300-1500	⊗ 1705/3100 (h) x 1519 (w) x 400 (d) mm
2000 mm*	UB300-2000	⊗ 1705/3100 (h) x 2019 (w) x 400 (d) mm

* Comes with 2 poles



Extends up to 3m high!



Telescopic pole



Rigidising bracket increases banner longevity. Insertion hole for guiding pole into correct position

Basic

Liberty



Strong and stylish full graphic banner with oval shaped end covers for a unique look.

- Material:** Aluminium, plastic end caps on rail
- Rail:** Snap rail
- Pole:** Aluminium three-part bungee pole
- Leader:** Self-adhesive
- Graphic:** Single-sided
- Feet:** Twin, twist-out feet
- Bag:** Padded nylon bag with side opening

800 mm	UB122-800-01	⊗ 2080 (h) x 830 (w) x 350 (d) mm
850 mm	UB122-850-01	⊗ 2080 (h) x 880 (w) x 350 (d) mm
1000 mm	UB122-1000-01	⊗ 2080 (h) x 1030 (w) x 350 (d) mm



Full graphic visibility

Mantis



A unique roller banner offering a top rail with choice. This popular entry-level banner has a weighted base for optimum stability when deployed in busy environments.

- Material:** Aluminium, plastic end caps on rail
- Rail:** Snap rail
- Pole:** Aluminium three-part bungee pole
- Leader:** Self-adhesive
- Graphic:** Single-sided
- Feet:** Twin, twist-out feet
- Transport:** Padded nylon bag with side opening

600 mm*	UB216-600-01	⊗ 1685/2085 (h) x 618 (w) x 280 (d) mm
800 mm	UB216-800-01	⊗ 2085 (h) x 818 (w) x 280 (d) mm
850 mm	UB216-850-01	⊗ 2085 (h) x 868 (w) x 280 (d) mm
1000 mm	UB216-1000-01	⊗ 2085 (h) x 1018 (w) x 280 (d) mm

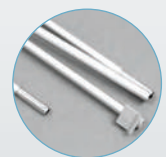
* The 600 mm version comes with:
 - a bungee pole in three parts (1600 mm high graphic)
 - a pole extension (2000 mm high graphic)



Easy to assemble



Rigidising bracket



Pole extension for 600mm version only

Wasp

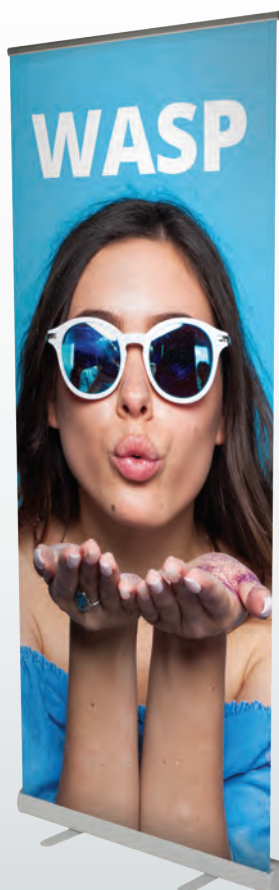


Entry level banner, ideal for short-term events or displays. Lightweight, easy to carry and recycle once finished with.

- Material:** Plastic, aluminium rail
- Rail:** Snap rail
- Pole:** Aluminium three-part bungee pole
- Leader:** Self-adhesive
- Graphic:** Single-sided
- Feet:** Twin, twist-out feet
- Bag:** Simple nylon

600 mm*	UB204-600-05	☰, 1710/2080 (h) x 615 (w) x 320 (d) mm
800 mm	UB204-800-03	☰, 2080 (h) x 815 (w) x 320 (d) mm
850 mm	UB204-850-03	☰, 2080 (h) x 865 (w) x 320 (d) mm
1000 mm	UB204-1000-03	☰, 2080 (h) x 1015 (w) x 320 (d) mm

* The 600 mm version comes with:
 - a bungee pole in three parts (1600 mm high graphic)
 - a pole extension (2000 mm high graphic)



Snap rail



Simple nylon

Our most economical aluminium roller banner

Element

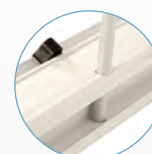


Economical white ABS roller banner which is ideally suited for retail environments.

- Material:** Plastic, aluminium rail
- Rail:** Snap rail
- Pole:** Aluminium three-part bungee pole
- Leader:** Self-adhesive
- Graphic:** Single-sided
- Feet:** Twin, twist-out feet
- Bag:** Simple nylon

800 mm	UB146-800	☰, 2090 (h) x 830 (w) x 280 (d) mm
850 mm	UB146-850	☰, 2090 (h) x 880 (w) x 280 (d) mm
1000 mm	UB146-1000	☰, 2090 (h) x 1030 (w) x 280 (d) mm

White ABS recycled white base



White base

The most economical banner on the market

Recto-Verso

Dragonfly 2



Economical double-sided roller banner with pole storage in base.

- Material:** Aluminium, plastic end caps on rail
- Rail:** Snap rail
- Pole:** Aluminium three-part bungee pole
- Leader:** Self-adhesive
- Graphic:** Single-sided ou Double-sided
- Feet:** Twin, twist-out feet
- Bag:** Padded nylon

850 mm	UB199-850-01	⊗ 2105 (h) x 890 (w) x 395 (d) mm
1000 mm	UB199-1000-01	⊗ 2105 (h) x 1040 (w) x 395 (d) mm



Edge 2



Mid-range, double-sided elegant roller banner with stylish chromed end covers. Self-supporting base to maximize floor space.

- Material:** Aluminium, chrome base end covers
- Rail:** Snap rail
- Pole:** Aluminium three-part bungee pole
- Leader:** Self-adhesive
- Graphic:** Single-sided ou Double-sided
- Bag:** Padded nylon

850 mm	UB200-850	⊗ 2100 (h) x 890 (w) x 190 (d) mm
1000 mm	UB200-1000	⊗ 2100 (h) x 1040 (w) x 190 (d) mm



Elegant double-sided banner with stylish chrome end covers

Excaliber 2

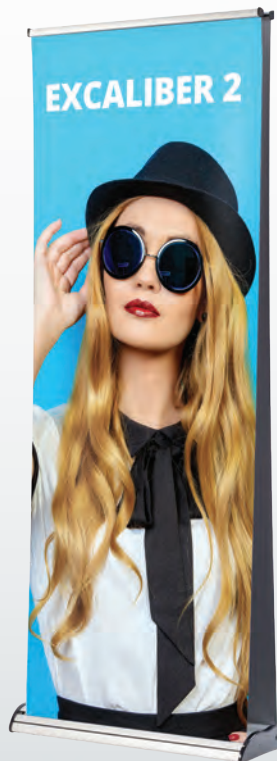


Great premium double-sided banner which can be accessorised using it's linear channel with iPad holders, shelving and leaflet holders.

- Material:** Aluminium, plastic end caps on rail
- Rail:** Premium dual action self-adhesive and snap rail with secure end caps
- Pole:** Hybrid telescopic pole
- Leader:** Self-adhesive sliding leader
- Graphic:** Single-sided ou double-sided
- Feet:** Adjustable
- Bag:** Padded nylon with side opening and foam reinforced ends

800 mm	WH311C-800A3	⊗ 1600/2220 (h) x 860 (w) x 275 (d) mm
1000 mm	WH311C-1000A3	⊗ 1600/2220 (h) x 1060 (w) x 275 (d) mm
1200 mm*	WH311C-1200A3	⊗ 1600/2220 (h) x 1260 (w) x 275 (d) mm
1500 mm*	WH311C-1500A3	⊗ 1600/2220 (h) x 1560 (w) x 275 (d) mm
2000 mm*	WH311C-2000A3	⊗ 1600/2220 (h) x 2060 (w) x 275 (d) mm
2400 mm**	WH311C-2400A3	⊗ 1600/2220 (h) x 2460 (w) x 275 (d) mm

*Comes with 2 poles **Comes with 3 poles



Extends from 1600 up to 2200mm

Accessorise using the linear channel and make your display multifunctional (see page 5)

Exclusive premium roller banner



Stellar



Uniquely designed desktop roller banner. Ideally suited for displaying on tables or counters and retails at a great low price.

Material:	White injected moulded plastic
Rail:	Self-adhesive
Pole:	White two-part pole
Leader:	Self-adhesive
Graphic:	Single-sided
Bag:	Not included

Stellar A4	UB162-A4	⊗ 320 (h) x 231 (w) x 78 (d) mm
Stellar A3	UB162-A3	⊗ 444 (h) x 312 (w) x 78 (d) mm



Liberty Mini



Full graphic, compact, versatile and lightweight desktop roller banner. Height extendable from 1200mm to 1600 mm when using extension pole.

Material:	Aluminium, plastic end caps on rail
Rail:	Self-adhesive
Pole:	Two Part-pole, height 400 - 800mm Four Part pole, height 1200 - 1600mm
Leader:	Self-adhesive
Graphic:	Single-sided
Bag:	Padded nylon

Liberty Mini 400 mm	UB122-400	⊗ 450/850 (h) x 430 (w) x 125 (d) mm
Extension Pole 1200-1600mm	EP-MINI	⊗ 400-800 (h) mm



Breeze



Ideal as mini table roller banner or promotional gift. Ultra-light and easy to assemble.

Material:	Aluminium, plastic end caps on rail
Rail:	Self-adhesive
Pole:	Two-part pole
Leader:	Self-adhesive
Graphic:	Single-sided
Bag:	Not included

Breeze A4	WH360	⊗ 335 (h) x 238 (w) x 80 (d) mm
Breeze A3	WH361	⊗ 440 (h) x 332 (w) x 82 (d) mm



Two-part pole



Modulaire

Aero+



Modular cassette roller banner system, adjustable in height, width and re-positionable at different angles. Multiple configurations possible with additional banners.

- Material:** Aluminium and plastic
- Rail:** Snap rail
- Pole:** Graphics adjustable to five fixed points on post*
- Leader:** Self-adhesive
- Graphic:** Single-sided
- Feet:** Fold-out feet for ease of transportation
- Bag:** Padded nylon

Cassette 1000 mm	UB222-1000	⊘ 1000 (w) mm
Cassette 1500 mm	UB222-1500	⊘ 1500 (w) mm
Cassette 2000 mm	UB222-2000	⊘ 2000 (w) mm
Base and post	UB222-P	⊘ 2120 (h) x 500 (w) x 500 (d) mm

* 1310/1510/1710/1910/2110mm - depending on configuration

Multiple configurations

Height adjustable



Folding feet



Adjustable collar on telescopic poles



Unique cassette locking system



Graphic tensioner

Optional LED lighting



Accessorise your Aero+

Universal Clamp	UB222-01
Bracket for leaflet holder	FX839
Shelf	LN133-R/T/S
Bracket for iPad*	FX837
iPad tablet holder* (black / white)	IPAD-CHU-W/B
Bracket for shelf	FX838

* iPad not included



Bracket for leaflet holder



Bracket for iPad



Bracket for shelf



Universal clamp



Shelf



iPad Holder



Tension Banners

Our most versatile range of banners, designed to fit into any space and provide a seamless image and backdrop that gives maximum impact.

Our Tension Banner systems can be modular and linkable to create any size and shape, or simple stand-alone units, making them versatile and easy to use. They are also available in a wide range of substrates.



Perfect for situations where you need to change your message frequently, such as a retail or a show environment.

Our Tension Banners are a popular and cost-effective solution that allow for the quick and easy changeover of graphics. Many also come supplied with sturdy nylon bags for ease of transport.

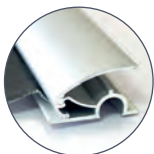
Our banners come in a wide variety of sizes, from a height of 1500 to 2900mm, and widths ranging from 300 to 1500mm.

For more flexible solutions, our Uno and Stealth banners can be linked to create modular systems that can be re-configured to make the best use of the space you have.

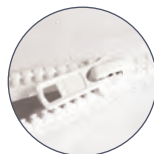
Choosing the right Tension Banner:

1. Will your banner need to be packed up and moved regularly?
2. How often will the banner be re-used and need a change of graphic?
3. What is the size of the footprint that you need to use your banner within?
4. Do you have any height restrictions? As our banners can be provided in a range of heights to take advantage of vertical spaces or limitations.
5. Are you deploying in high traffic environments? As our banners are supplied with a range of bases to suit each space.

Graphic Attachments



Snap rail



Zip cover



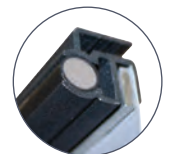
Panel recess



Aluminium frame for silicone edged graphics



Eyelets



Adhesive slider



Animate your communications with u.motion



This new technology, commonly known as digital signage, is integrated into an existing solution: Vector 75 mm frame. The dynamic display combines printed textiles (fixed by SEG) with LED animations: it is an intermediate solution between the digital screen and the fixed textile frame. The solution is characterised by its simplicity of assembly and the ability to be reprogrammed to deliver new messages. A simple USB key is enough to make the visuals dynamic and offer a new dimension to communication.

To highlight a logo, a product or a message, the concept is very simple. Choose your visual and imagine its animation. Our team takes care of programming the animation and provides it to you on an USB key. As a totem application, it offers a unique sensory experience in a shop, window display or on a trade fair stand.



To find out more,
flash the QR code



Vector Media

Available summer 2020



This sturdy self-supporting aluminium frame with a hybrid profile offers an alternative use of visuals. Choose PVC with its magnetic tape or the classic textile visual with a Silicone gasket. Ideal for all retail applications.

- Material:** Aluminium
- Profile depth:** 35 mm
- Colour:** Silver / Black
- Assembly:** Tool less
- Graphic attachment:** For textile graphics: 3 mm SEG
For PVC graphics: magnetic tape (included)
- Graphic area:** Single or double-sided
- Mounting:** Freestanding solid foot

Vector Media	VF-MEDIA-16X06	📏 1600 (h) x 600 (w) x 35 (d) mm
--------------	----------------	----------------------------------



PVC graphic with magnetic tape



Textile graphic with SEG

One frame,
two graphic
attachment



Very stable base



600 x 1600 mm
Ideal for
a Retail
environment

Kit Vector 50 mm



Robust aluminium free-standing frame, packs down for ease of transportation and available in a wide range of sizes accommodating a SEG graphic creating the perfect look for any retail scenario.

- Material:** Aluminium
- Profile depth:** 50 mm
- Colour:** Silver
- Assembly:** Push-button connector, Allen key
- Graphic attachment:** SEG 3 mm
- Graphic area:** Single or double-sided
- Mounting:** Free-standing with flat feet (included)

Kit 2x1	VKF-2x1	📏 2005 (h) x 1000 (w) x 350 (d) mm
Kit 2x2	VKF-2x2	📏 2005 (h) x 2000 (w) x 350 (d) mm
Kit 2x3	VKF-2x3	📏 2005 (h) x 3000 (w) x 350 (d) mm
Custom sizes	VKF-CUSTOM	📏 Custom sizes

Connect multiple
kits according to
your needs



VKF-2x2



VKF-2x1



Flat feet included



Fabric graphic with silicone edge gasket (SEG)



Screw different frames together



Assembly of angled sections with push-button

Kit Vector LED 75 mm u.motion



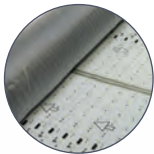
U·MOTION™



Digital signage technology integrates into a 75 mm Vector profile. The rollable LED curtain provides a roving and easy to install solution. Six standard formats available. Also available as a landscape wall (see page 53)

Material:	Aluminium
Profile depth:	75 mm
Colour:	Silver (White / black optional)
Assembly:	Screw-in bracket, Allen key
Graphic attachment:	SEG 3 mm
Graphic area:	Single sided
Mounting:	Free-standing
Bag:	Tube bag with LED curtain included

Kit u.motion 2x1	VLB75-UMOT-F-20X10	⊗ 2000 (h) x 1000 (w) x 550 (d) mm
Kit u.motion 2x2	VLB75-UMOT-F-20X20	⊗ 2000 (h) x 2000 (w) x 550 (d) mm
Kit u.motion 2x3	VLB75-UMOT-F-20X30	⊗ 2000 (h) x 3000 (w) x 550 (d) mm
Kit u.motion 2500 x 950	VLB75-UMOT-F-25X09	⊗ 2500 (h) x 950 (w) x 550 (d) mm
Kit u.motion 2500 x 1800	VLB75-UMOT-F-25X18	⊗ 2500 (h) x 1800 (w) x 550 (d) mm
Kit u.motion 2500 x 2700	VLB75-UMOT-F-25X27	⊗ 2500 (h) x 2700 (w) x 550 (d) mm



LED curtain included



Control unit



USB animation key



Tube bag included



Trolley for transporting several tube bags

Illuminate the elements that you want





Kit Vector LED 125 mm



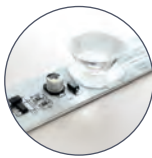
Illuminate to communicate! This robust free-standing LED frame perfectly suits interior displays that need to be regularly updated to keep up with changing trends.

- Material:** Aluminium
- Profile depth:** 125 mm
- Colour:** Silver (black / white in option)
- Assembly:** Screw-in bracket, Allen key
- Graphic attachment:** SEG 3 mm
- Graphic area:** Single-sided (one side printed with block-out rear)
Double-sided (both sides printed)
- Mounting:** Free-standing with flat retail feet (included)

Kit 2x1 LED	VLB125-2x1-FR	📏 2005 (h) x 1000 (w) x 550 (d) mm
Kit 2x2 LED	VLB125-2x2-FR	📏 2005 (h) x 2000 (w) x 550 (d) mm
Kit 2x3 LED	VLB125-2x3-FR	📏 2005 (h) x 3000 (w) x 550 (d) mm
Custom sizes	VLB125-CUSTOM	📏 Custom sizes



Slimline transformer



LED strip



Cabling system



Ideal for shop advertisement

Available in three standard sizes and custom sizes!



Illumigo



Portable LED lightbox comes in a compartmented box with handle for ease of transportation. Tool-free assembly, pre-assembled LED lighting, stabilising feet and lightweight white powder-coated aluminium frame.

- Material:** White aluminium
- Profile depth:** 100 mm
- Assembly:** Tool-free
- Graphic attachment:** SEG 3 mm
- Graphic area:** Double-sided
- Mounting:** Self-supporting with pivoting feet fixed to the structure
- Bag:** Protective box with carry handle

Illumigo	ILLGO-2X1-EU	📏 2000 (h) x 1000 (w) x 400 (d) mm
----------	--------------	------------------------------------



Pre-assembled LED lighting



Quick and easy tool-free assembly



Compartmented transportation box



Quick assembly lighting solution



Twist out feet



The most economical 2x1 lightbox



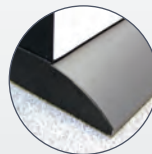
Kit Vector 125mm LED Retail



In retail where appearance is everything, styling combined with an ultra stable base compliments this SEG graphic lightbox.

Material:	Black aluminium frame, aluminium-steel base
Profile depth:	125 mm
Assembly:	Screw-in bracket, Allen key
Graphic attachment:	SEG 3 mm
Graphic area:	Double-sided
Mounting:	Free-standing with retail base (included)

800 mm	VLB125-18X08-B-01	⊗ 1882 (h) x 800 (w) x 350 (d) mm
1000 mm	VLB125-20X10-B-01	⊗ 2082 (h) x 1000 (w) x 350 (d) mm



Black end caps



LED Strip



Adjustable feet under the base

↪ Perfect combination between stylish look and stability



Stealth



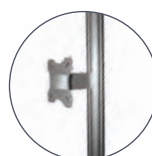
The portability of a banner stand with the flexibility of a modular display system. Used singularly or link using flexible panels to create graphic walls that can be curved to different angles.

- Material:** Aluminium
- Assembly:** Twist and Lock
- Graphic attachment:** Magnetic
- Graphic area:** Single-sided or double-sided (straight configuration only)
- Mounting:** Free-standing

Stealth 800 mm	UB106	Ⓞ 2115 (h) x 800 (w) x 350 (d) mm
----------------	-------	-----------------------------------

Accessories:

Shelf	LNST-002	Ⓞ N/A
Literature Holder A4	LNST-001	Ⓞ N/A
LCD Screen / iPad Bracket*	UB106-SMK1	Ⓞ N/A
Design iPad Holder* Black/White	IPAD-CHU-B/W	Ⓞ 310 (h) x 225 (w) x 20 (d) mm
300 mm Flexi joining kit	UB106-004	Ⓞ N/A
600 mm Flexi joining kit	UB106-001	Ⓞ N/A



Lcd screen / iPad bracket*



Thermoformed shelf



Design iPad holder*



Literature Holder A4



Flexi joining panel kits



Optional LED lighting
PS950/1000-LED -BDLK
LED-FLOOD-ARM-BDLK
LED-STRIP-ARM-BDLK



Reconfigure and angle to maximise your display space

Easy magnetic linking panels

Single or double sided



*All tablets, iPads and LCD screens are not included and not available to purchase. Max screen weight: 5 kg

Formulate Monolith LED



The new Formulate Monolith LED brings illumination to our ever popular Formulate range. With the ability to vary the height from 2m to 2.38m. This smart LED Lightbox is double-sided, easy to build and portable.

Material:	Aluminium tubing
Diamètre du tube :	30 mm
Assembly:	Push-button - tool-free
Graphic attachment:	Zipped tension fabric graphic
Graphic area:	360°
Mounting:	Free-standing
Bag:	Sac Padded

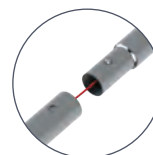
Monolith LED	FORM-MON-LED-1100	Ⓞ, 2000/2380 (h) x 1100 (w) x 320 (d) mm
--------------	-------------------	--



360°



LED Strip



Bungeed push button lock



Tension fit zipped fabric graphics

Stable structure



Stabilising feet



Tubes are connected by bungee cord and push buttons

Double-sided frame with dramatic shape!



Weighted base for additional stability

Formulate Wave



With an impressive height of 2.38m, stability is ensured with sleek steel feet. Made from Formulate aluminium tubing it's a real alternative to traditional roller banners.

Material:	Aluminium tubes, steel stabilising feet
Diamètre du tube :	30 mm
Assembly:	Push-button, Allen key
Graphic attachment:	Zipped tension fabric graphic
Graphic area:	Single or double-sided
Mounting:	Free-standing with feet (included)
Bag:	Padded

Wave	FORM-WAVE	Ⓞ, 2380 (h) x 900 (w) x 608 (d) mm
------	-----------	------------------------------------

Formulate Snake



Eye-catching shape tension banner made from strong and lightweight Formulate tubular system. Weighted horizontal and support poles for maximum stability.

Material:	Aluminium tubes
Diamètre du tube :	30 mm
Assembly:	Push-button, Allen key
Graphic attachment:	Zipped tension fabric graphic
Graphic area:	Single or double-sided
Mounting:	Free-standing
Bag:	Padded

Snake	FORM-SNA	Ⓞ, 2380 (h) x 900 (w) x 700 (d) mm
-------	----------	------------------------------------

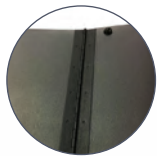
Formulate Monolith



This monolithic lightweight structure is mounted on a sturdy metal base for extra stability, hinged for ease of transportation from sizes 900mm wide upward. Easy-fit fabric graphic which conceals the structure beneath.

- Material:** Aluminium tubes, steel base
- Diamètre du tube :** 30 mm
- Assembly:** Push-button - tool-free
- Graphic attachment:** Zipped tension fabric graphic
- Graphic area:** Double-sided
- Mounting:** Free-standing with metal base (included)
- Bag :** Padded with compartments

600 mm	FORM-MON-600	⊗, 2380 (h) x 600 (w) x 300 (d) mm
800 mm	FORM-MON-800	⊗, 2380 (h) x 800 (w) x 300 (d) mm
900 mm	FORM-MON-900	⊗, 2380 (h) x 900 (w) x 300 (d) mm
1000 mm	FORM-MON-1000	⊗, 2380 (h) x 1000 (w) x 300 (d) mm
1200 mm	FORM-MON-1200	⊗, 2380 (h) x 1200 (w) x 300 (d) mm
1500 mm	FORM-MON-1500	⊗, 2380 (h) x 1500 (w) x 300 (d) mm



Folding hinged base (sizes 900mm and above)



Bungee tubes

Accessorise it with optional literature or tablet holder



Zipped tension graphics for perfect fit

Formulate Monolith Eco



For the budget conscious and a real alternative to roller banners offering uninterrupted double sided graphics.

- Material:** Aluminium tubes, powder coated steel feet
- Diamètre du tube :** 25 mm
- Assembly:** Push-button, Allen key
- Graphic attachment:** Zipped tension fabric graphic
- Graphic area:** Double-sided
- Mounting:** Free-standing with feet (included)
- Bag:** Carry bag

800 mm	FORM-MON-ECO-800	⊗, 2009 (h) x 800 (w) x 378 (d) mm
1000 mm	FORM-MON-ECO-1000	⊗, 2009 (h) x 1000 (w) x 378 (d) mm



Numbered tubes for easy assembly



Bungee tubes

Cost effective double-sided solution



Toolless feet assembly

Vortex



Lightweight and stable X-shaped banner. Graphic attached with eyelets, perfect for regular message updates. Suitable for substrates from 225-300 microns.

Material:	Fibreglass, aluminium
Graphic attachment:	Eyelets
Graphic area:	Single-sided
Mounting:	Free-standing
Bag:	Carry bag with inner tube

Vortex	UB722-C	📏 1950 (h) x 855 (w) x 950 (d) mm
--------	---------	-----------------------------------



Eyelet bracket



Frame locking system



Reinforced feet for stability



Beijing Lite



Basic X-banner. Ultra-light frame. Very easy to assemble and compact once folded.

Material:	Fibreglass
Graphic attachment:	Eyelets
Graphic area:	Single-sided
Mounting:	Free-standing
Bag:	Budget drawstring carry bag

600 mm	WH358-6X16-01	📏 1600 (h) x 600 (w) x 500 (d) mm
700 mm	WH358-7X18-01	📏 1800 (h) x 700 (w) x 580 (d) mm
800 mm	WH358-8X18-01	📏 1800 (h) x 800 (w) x 650 (d) mm
800 x 2000 mm	WH358-8X20-01	📏 2000 (h) x 800 (w) x 720 (d) mm



Graphic attached by eyelets



Cost effective X-banner



Uno



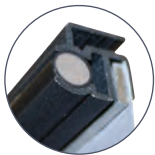
Black tension 'L' shape banner with telescopic pole. Optimal stability. Banners are linkable to form larger seamless backwalls, using PVC panels or textile graphics.

- Material:** Aluminium pole and rail
- Graphic attachment:** Optional adhesive for PVC and SEG for textile
- Graphic area:** Single-sided
- Mounting:** Free-standing with foot (included)
- Bag:** Bag and graphics cardboard tube

Uno 800 mm	UB101C-800-B	⊗ 1600/2210 (h) x 800 (w) x 365 (d) mm
Uno 1000 mm	UB101C-1000-B	⊗ 1600/2210 (h) x 1000 (w) x 365 (d) mm

Accessories :

Linking Kit	UB106-003	⊗ N/A
Pole extension	UB101C-EP	⊗ up to 2900 mm
Wall Fabric Kit 2 m	UB101C-WKIT-2M	⊗ 1600/2210 (h) x 2000 (w) x 365 (d) mm
Wall Fabric Kit 3 m	UB101C-WKIT-3M	⊗ 1600/2210 (h) x 3000 (w) x 365 (d) mm
Wall Fabric Kit 4 m	UB101C-WKIT-4M	⊗ 1600/2210 (h) x 4000 (w) x 365 (d) mm
Wall Fabric Kit 5 m	UB101C-WKIT-5M	⊗ 1600/2210 (h) x 5000 (w) x 365 (d) mm



Linking banner rail



Modern foot design

Link up to three PVC banners together, or five fabric banners as one impressive single graphic wall



1600 - 2210 mm

Lightning



Popular 'L' banner combining stability with easy change graphics, simple assembly and lightweight to transport.

- Material:** Aluminium
- Graphic attachment:** Top and bottom snap rail
- Graphic area:** Single-sided
- Mounting:** Free-standing with stabilising foot
- Bag:** Carry bag with inner tube

Lightning 800 mm	UB195-C	⊗ 2070 (h) x 805 (w) x 510 (d) mm
Lightning 1000 mm	UB195-C-1000	⊗ 2070 (h) x 1005 (w) x 510 (d) mm



Complete with carry bag with inner tube

Economical solution for interchangeable graphics



Three part bungee pole

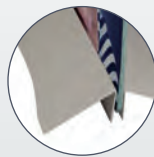




←
Graphic can be wider than the base



Optional CNC available for custom shaped graphics



Secure invisible fastening

Wedge



Durable and stable grey banner base. Designed to hold a variety of rigid graphics, supporting a range of sizes and thicknesses. Suitable for temporary outdoor use.

- Material:** Powder coated steel
- Graphic attachment:** Screwed to base
- Graphic area:** Single or double-sided
- Graphic option:** Rigid panel from 18-40mm thickness - optional extra 1500mm height max.
- Mounting:** Free-standing

Wedge 300 mm	UB102-300	☉, 85 (h) x 300 (w) x 360 (d) mm
Wedge 600 mm	UB102-600	☉, 85 (h) x 600 (w) x 360 (d) mm
Wedge 800 mm	UB102-800	☉, 85 (h) x 800 (w) x 360 (d) mm
Wedge 1000 mm	UB102-1000	☉, 85 (h) x 1000 (w) x 360 (d) mm



Flags

For both outdoor and indoor use, flags are an eye-catching option for displaying your message or giving directions.

There are a wide range of options available, from on-the-move street flags to our highly popular Zoom+ flags.

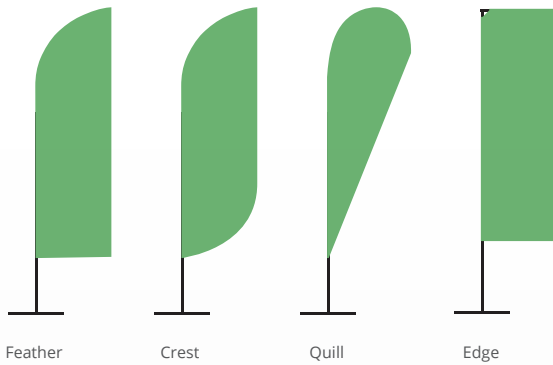
Flags are one of the most striking display options available.

Our flags can be made in a wide range of sizes, materials and finishes suitable for everyday environments such as tarmac, grass and for specialist environments including sand, snow and wall mounting.

No matter in which environment you wish to use our flags, we can provide a suitable construction and base that will serve your needs.



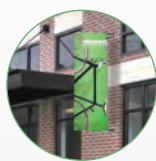
Flag shapes available



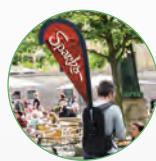
A Flag for all situations and locations



Free-standing



Wall mounted or post mounted



Backpack for mobility

Printing and finishing

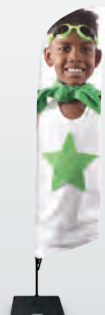
Classic

Elastic pocket, single-sided print (classic)



Full Graphic

Printed pocket (full graphic)



Double-sided printing

Tips for taking care of your flag:

Flags are often exposed to the harshest conditions, even the highest quality materials and finishes will suffer if not treated with care. Here is our guide on how to take simple care of your flags:

- 1. Consider the positioning of your flag to minimise the effects of the environment.**
Air pollution can turn white areas grey, and too much UV light can cause fading and fabric deterioration.
- 2. Reducing the flying time will preserve the life of your flag.**
A flag will last between six and eight months when flown constantly, so taking down the flag when not in use will help it to last longer.
- 3. Take note of the climatic conditions.**
Flags should be taken down during poor weather conditions. Heavy rain and strong winds can increase the weight of the flag and put extra strain on the flagpole. Our flags are designed to withstand Up to 18mph winds as standard.
- 4. Washing your flag.**
Flags can be machine washed with everyday soft detergents on a 30° wash. They should always be allowed to dry out completely before folding and storing.



Zoom+ Arch



Four large stackable water base for maximum stability

Comes with one pole (six part bungee pole and two end rods) two hooks and two elastic loops

Zoom+ Arch



The arch shaped flag is perfectly suited to identify entrances at events, particular sporting meets for registration areas, or race start / finish lines. For stability we recommend using two optional extra stackable bases per side.

- Material :** GRP fibre glass pole - chrome steel end caps, plastic hook
- Graphic :** Single-sided
- Graphic attachment :** Pole pocket
- Wind resistance :** Up to 32 km/h

Zoom+ Arch	ZOOM+ARCH	⊗ 2500/3000 (h) x 4000 (w) mm *
Stackable Water Base	UF-ZMSWB	⊗ 162.5 (h) x 642 (w) mm

* The height and width may vary depending on the size and shape of the graphic



Flag attached by elastic and plastic hook



Base weighted once filled with water



Handle for ease of transportation

Zoom+ Edge



Popular versatile lightweight flexible flag system with black finish all fibre poles. Ideal for all types of indoor or outdoor displays.

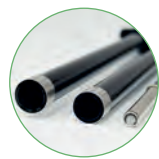
- Material :** Aluminium and GRP
- Pole :** Fibre
- Graphic :** Single or double-sided (only up to large size)
- Graphic attachment :** Printed pole pocket with stitched flag cord for tension
- Wind resistance :** Up to 18 mph / 29 km/h

Edge

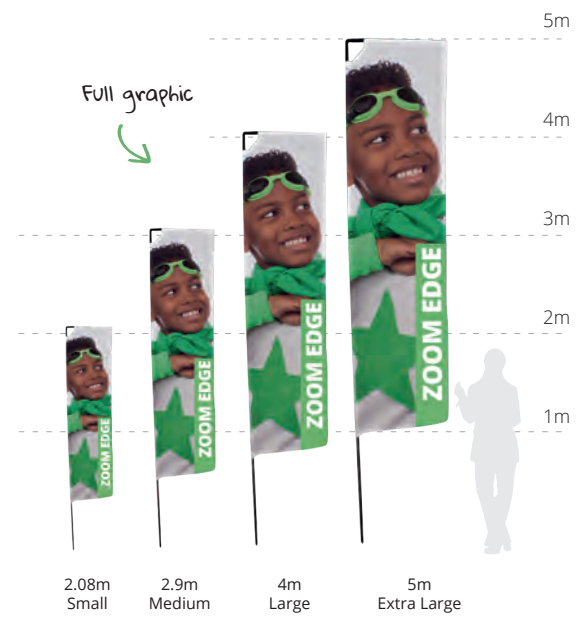
Extra Large 5m	UF-ZME-EXLA	⊗ 5000 (h) x 750 (w) mm
Large 4m	UF-ZME-LA	⊗ 4000 (h) x 750 (w) mm
Medium 2.9m	UF-ZME-ME	⊗ 2900 (h) x 750 (w) mm
Small 2m	UF-ZME-SM	⊗ 2080 (h) x 750 (w) mm

Accessories :

Bag	AB-ZML-01
-----	-----------



Zoom+ all fibre poles



Zoom+ Crest / Feather / Quill



Popular versatile lightweight flexible flag system with black finish all fibre poles. Each flag can accommodate three different shaped graphics.

- Material :** Aluminium and GRP
- Pole :** Fibre
- Graphic :** Single or double-sided (only up to large size)
- Graphic attachment :** Elastic pole pocket with stitched flag cord for tension
- Wind resistance :** Up to 18 mph / 29 km/h

Crest / Feather

Extra Large 4.9m	UF-ZM-EXLA	⊗ 4900 (h) x 850 (w) mm
Large 4m	UF-ZM-LA	⊗ 4000 (h) x 800 (w) mm
Medium 3.2m	UF-ZM-ME	⊗ 3200 (h) x 600 (w) mm
Small 2.6m	UF-ZM-SM	⊗ 2600 (h) x 550 (w) mm

Quill

Extra Large 4.6m	UF-ZM-EXLA	⊗ 4600 (h) x 1200 (w) mm
Large 3.5m	UF-ZM-LA	⊗ 3500 (h) x 1100 (w) mm
Medium 2.8m	UF-ZM-ME	⊗ 2800 (h) x 900 (w) mm
Small 2.1m	UF-ZM-SM	⊗ 2600 (h) x 800 (w) mm

Accessories :

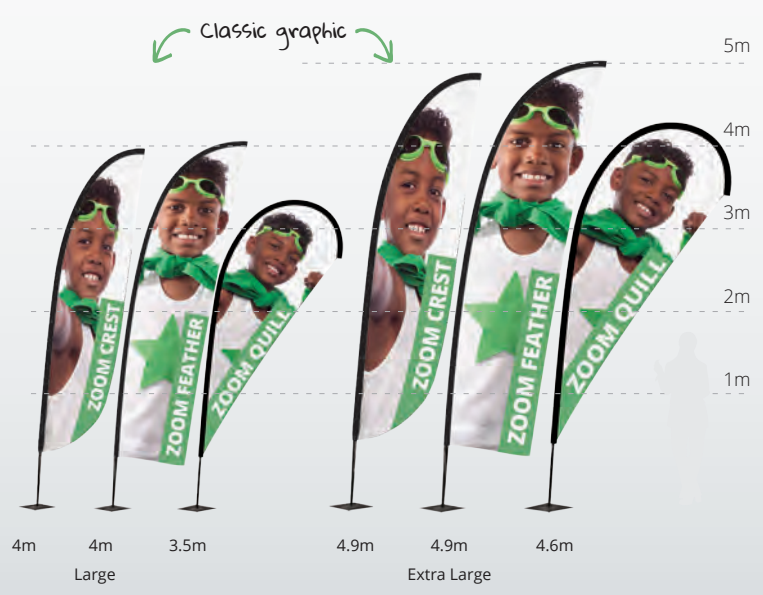
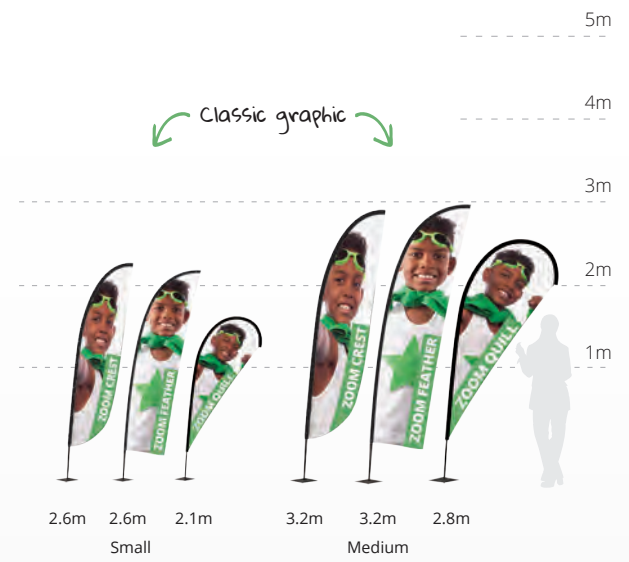
Bag	AB-ZML-01
-----	-----------



Adjustable hook fastening on all Zoom+ flag poles excluding Edge



Pole carry bag



Recommended bases for Zoom+ Flags:

Bases			Zoom+ Flag shapes Edge / Quill / Crest / Feather				 Use with Weighting Ring UB719-C	 Use with Heavy Duty Peg FX620
Base	Code	Weight / Capacity	Extra Large	Large	Medium	Small		
	Water Base UF-ZMGMB	26 Litres			✓	✓		
	Large Water Base UF-ZMLWB	30 Litres	✓	✓	✓	✓		
	Stackable Water Base UF-ZMSWB	26 Litres	✓	✓	✓	✓		
	Small Square Base UF-ZMLSQ-01	7.26 kg			✓	✓	✓	✓
	Large Square Base UF-ZMLSQ-03	11.78 kg	✓	✓	✓	✓	✓	✓
	Small Cross Base UF-ZMSCB-01	N/A			✓	✓	✓	✓
	Large Cross Base UF-ZMLCB-01	N/A	✓	✓	✓	✓	✓	✓
	Standard Ground Spike ZF-ZMGS-01	N/A	✓	✓	✓	✓		
	Plastic Ground Stake UF-ZMPSS-01	N/A	✓	✓	✓	✓		
	Concrete Base UF-ZMCEM	22kg	✓	✓	✓	✓	✓	✓
	Drive On Car Foot UF-ZMCF5-01	N/A	✓	✓	✓	✓		
	Wall Mount UF-ZMWMF-01	N/A			✓	✓		

Where flags are shown to be suitable for use with specific bases they have been tested in wind speeds of up to 18mph/29km/h

Shimmer



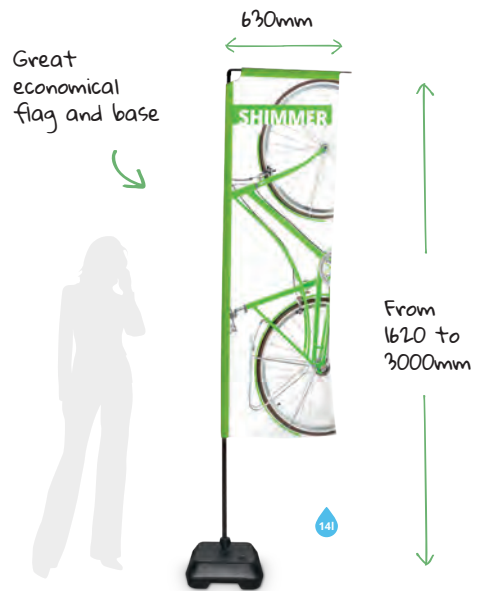
Economical telescopic flag with black water-fillable base included. Adjustable height up to 3m. Transport bags optional.

- Material :** Aluminium pole, plastic base
- Pole :** Telescopic (1540/2850 mm)
- Graphic :** Single-sided or double-sided
- Graphic attachment :** Printed pole pocket
- Base capacity :** 14 litres
- Wind resistance :** Up to 18 mph / 29 km/h

Shimmer	WD102-01	📏, 1620/3000 (h) x 630 (w) x 385 (d) mm
---------	----------	---

Accessories :

Bag	AB120D	1580 (h) x 155 (Ø) mm
Bag with tube	AB120DM	1580 (h) x 155 (Ø) mm



Wind Dancer



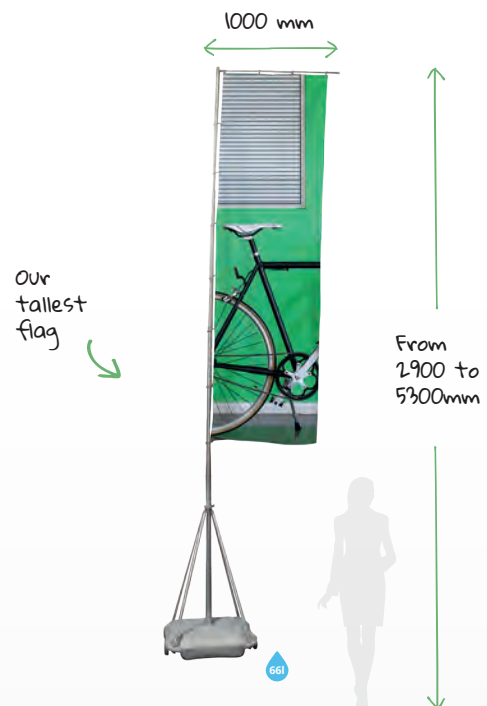
Telescopic flag, ideal for making an impact at outdoor events. Base can be filled with water or sand for optimum stability. Optional extra bags available for ease of transporting or storage.

- Material :** Aluminium pole, plastic base
- Pole :** Telescopic
- Graphic :** Single-sided or double-sided
- Graphic attachment :** Eyelets
- Base capacity :** 66 litres
- Wind resistance :** Up to 18 mph / 29 km/h

Wind Dancer	WD105	📏, 2900/4170/5300 (h) x 1000 (w) x 1000 (d) mm
-------------	-------	--

Accessories :

Bag (pole and base)	AB105-C
---------------------	---------



Mistral



Perfect for promoting events outside, flags can be wall, pole or lamp post mounted and are made from weatherproof materials.

- Material :** Aluminium castings and GRP tubes
- Tubes :** Height adjustable
- Graphic :** Single-sided or double-sided
- Graphic attachment :** Pole pocket
- Wind resistance :** Up to 40 km/h

Mistral	UB725-01	📏, Up to 2000 (h) x 890 (w) mm
---------	----------	--------------------------------

Maximum clamp pole diameter Ø 300mm



* Wall fixings not provided

NB: We strongly recommend wind slits for continuous use in all weather conditions. Wind slits reduce pressure on graphics.

Street Flag



The ideal advertising medium when on the move!
 Perfectly suited to promote events, highlight your presence at trade shows or to organise a group of people on excursions!
 This rugged and lightweight backpack can be used with four different flag shapes using the supplied poles.

- Material :** Reinforced nylon backpack, fibre poles
- Graphic :** Single-sided
- Graphic attachment :** Pole pocket or eyelets (X-banner)
- Graphic shapes :** Feather - Quill - Edge - X-banner

Street Flag	UF-ZMSTF-01	Ⓞ 540 (H) x 310 (B) x 80 (T) mm
-------------	-------------	---------------------------------



Reinforced pole fixing system



Zipped storage for poles and rods



Mesh storage pocket on the sides



Zipped flag storage compartment

One bag but four different flag shapes!



Quill



Edge



Outdoor

Giving your message the impact it deserves in outdoor locations requires specialist, high quality solutions.

Choose from our comprehensive range of banners and signage for displaying your brand in a wide variety of indoor or outdoor locations. Our range also includes tents, counters and backwalls, sign boards and barriers for pedestrian guidance, not to mention our choice of inflatables and parasols.



Choosing the right outdoor display product is important to ensure maximum branding impact and to attract your desired visitors and customers.

It is also critically important to make the right choice that will suit your environment; display area size, possible weather conditions, visitor numbers, mobility and repeat usage.

A taller display may make all the difference to the impact and performance of your branding.

Some Tips To Take Care Of Your Products

Outdoor products are designed for moderate outdoor usage during the daytime. But even high quality materials deteriorate if not treated with care and used in extreme weathers.

1. Choose your location carefully to minimise the effects of the environment.

Air pollution can turn white to grey, UV rays can also alter the colour of your visuals and cause deterioration on materials used.

2. Optimise exposure time.

By storing your Outdoor products between each use, their lifespan will be extended.

3. Consider climatic conditions.

All Outdoor products are not weather resistant in the same way. Heavy rain combined with high winds may increase the risk of deterioration of certain products. Follow the instructions given in the technical specification data sheets of each product provided.

Designed For All Occasions

- Outdoor Exhibitions
- Music Festivals
- Markets
- Sport Events
- Outside Sales Outlets
- Fairs
- and many others!

Our Outdoor Range



Roller and Tension Banners



Inflatable Displays



Pavement Signage



Café barriers



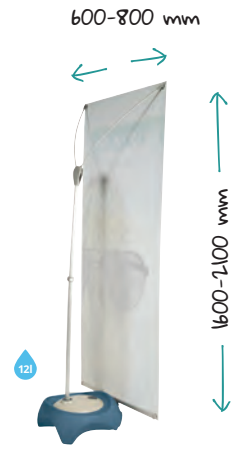
Parasols



Signage



Tents



Large removable twin feet



Three part bungee pole



Metal pegs

Blizzard



Easy to assemble on location, secured with its large capacity base, graphic size is adjustable width and height to suit most applications.

Material:	Plastic and metal
Pole:	Adjustable width and height
Graphic area:	Single-sided
Graphic attachment:	Eyelets
Base capacity:	12 litres
Wind resistance:	Up to 29 km/h
Bag:	Non-padded bag (included) / Padded bag (optional)

Blizzard	UB701	Ⓢ 1600/2100 (h) x 600/800 (w) x 540 (d) mm
----------	-------	--

Accessories :

Blizzard padded bag	AB140-C
---------------------	---------

Thunder 2



The only outdoor roller banner with double sided graphics for maximum brand exposure and impact.

Material:	Plastic, aluminium and steel
Pole:	Three part bungee pole
Graphic area:	Double-sided
Graphic attachment:	Self-adhesive leader / Top snap rail
Ground fixing:	4 pegs (included)
Wind resistance:	up to 11 km/h (unpegged) up to 39 km/h (if pegged)
Transport:	Padded bag (included)

Thunder 2	UB185-850-01	Ⓢ 2100 (h) x 884 (w) x 740 (d) mm
-----------	--------------	-----------------------------------

Horizon



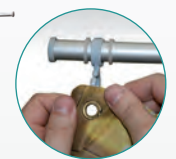
Maximum exposure display unit, perfect for outdoor large scale promotions. Securely weighted by twin water filled bases for total stability.

Material:	Aluminium, moulded grey plastic base
Pole:	Adjustable height (1500-2400 mm)
Graphic area:	Single or Double-sided
Graphic attachment:	Eyelets
Base capacity:	28 liters per tank
Wind resistance:	Up to 19 km/h
Bag:	Non-padded bag (Optional)

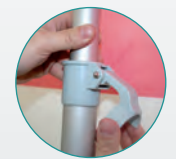
Horizon	UB203	Ⓢ 1500/3000 (h) x 2500 (w) x 800 (d) mm
---------	-------	---

Accessories :

Horizon pole bag	AB195A	Ⓢ 1730 (h) x 230 (w) x 190 (d) mm
Horizon base bag	AB195B	Ⓢ 900 (h) x 490 (w) x 370 (d) mm



Graphic attached with eyelets



Telescopic pole with bungee for adjustable height

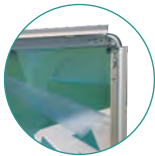
A-sign Board



Robust and sturdy Graphic area 'A' Poster frame with easy graphic front loading. Suitable for outdoor or indoor use.

Material: Aluminium, Galvanised steel, PVC sheet cover
Graphic area : Double-sided
Graphic attachment : Snap rail

A-sign Board A2	VF204-A2	925 (h) x 465 (w) x 675 (d) mm
A-sign Board A1	VF204-C	1060 (h) x 638 (w) x 825 (d) mm
A-sign Board A0	VF204-C-A0	1440 (h) x 883 (w) x 835 (d) mm
A-sign Board B1	VF203	1220 (h) x 848 (w) x 925 (d) mm
A-sign Board B0	VF203A	1620 (h) x 1128 (w) x 1025 (d) mm



Complete with clear protective graphic cover

Easy to fold away for storage



Whirlwind



A heavy-duty pavement swing sign with poster quick front loading. Easy to move thanks to its wheeled base and handle.

Material: Aluminium, steel, plastic base, PVC sheet cover
Graphic area : Double-sided
Base capacity : 25 l (A1) / 55 l (A0) / 49 l (B1)
Graphic attachment : Snap rail
Wind resistance: Up to 29 km/h

Whirlwind A1	UB207	1165 (h) x 780 (w) x 500 (d) mm
Whirlwind A0	UB207-A0	1554 (h) x 1010 (w) x 625 (d) mm
Whirlwind B1	UB207-B1	1350 (h) x 1000 (w) x 620 (d) mm



Wheeled compact moulded hollow base



Snap frame

Poster protected by PVC sheet



Spring pivot for swing motion

25l 55l 49l



Ideal for informing about a menu or opening hours

Shield



Functional rigid sign board with flexible aluminium panel securely bolted to the base. Safe graphic with rounded corners.

- Material:** Recycled rubber base, aluminium panel (1.2 mm)
- Graphic area :** Double-sided
- Base :** 8 kg
- Graphic attachment :** Bolts
- Wind speed:** up to 29 km/h

Shield	UB108	📏 800 (h) x 465 (w) x 450 (d) mm
--------	-------	----------------------------------

Accessories :

Shield replacement panel	UB108P	📏 800 (h) x 410 (w) x 1.2 (d) mm
--------------------------	--------	----------------------------------



Print your message directly onto aluminium or mount self-adhesive vinyl



Choose between bottom spring clips or rail fixing options



Secure rail

Allows graphic movement thanks to bottom spring clips option

Deluxe Café



A modular portable café barrier system, chromed effect finish, to get a premium look and feel.

- Material:** Stainless steel
- Graphic area :** Double-sided
- Weight :** 7.75 kg (Post and Base)
- Graphic attachment :** Looped top rail
Looped bottom rail or spring clips

Graphic Rail 1000 mm	UB215-1000	⊘ 1140 (w) mm
Graphic Rail 1500 mm	UB215-1500	⊘ 1940 (w) mm
Graphic Rail 2000 mm	UB215-2000	⊘ 2440 (w) mm
Base	UB215B	⊘ 360 (Ø) mm
Post	UB215P	⊘ 960 (h) mm
Spring clips (pair)	UB215-SC	

Economy Café



A cost effective way of defining areas outside restaurants, bars and shopping centres. Heavyweight post and base. Black finish.

- Material:** Stainless steel
- Graphic area :** Double-sided
- Weight :** 7.75 kg (Post and Base)
- Graphic attachment :** Looped top rail
Looped bottom rail or spring clips

Graphic Rail 1000 mm	UB214-1000	⊘ 1140 (w) mm
Graphic Rail 1500 mm	UB214-1500	⊘ 1940 (w) mm
Graphic Rail 2000 mm	UB214-2000	⊘ 2440 (w) mm
Base	UB214B	⊘ 360 (Ø) mm
Post	UB214P	⊘ 960 (h) mm
Spring clips (pair)	UB214-SC	

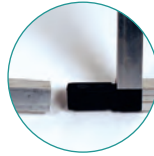


An easy and simple way to define areas while advertising at the same time

Monsoon

The Monsoon is a large format Graphic outdoor 'A' frame banner, made from lightweight aluminium, ideal for use with PVC eyelet banners.

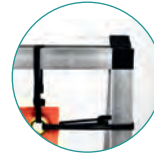
This trusted best selling banner is also available in wall mounted format, suitable for indoor or outdoor use. Easy to fit graphic can be changed regularly to suit your needs.



Push-fit joints



Wall mounted bracket



Graphic attached with eyelets



Metal hinges

Wall Monsoon



Specially designed for business premises front advertising. Graphic is secured with adjustable looped bungee cords.

Material: Aluminium tubes (25 mm), plastic connectors

Graphic area : Single-sided

Graphic attachment : Eyelets and looped bungee cords

Wall Monsoon 1250 mm	UB712	⊗ 1250 (h) x 1250 (w) x 130 (d) mm
Wall Monsoon 2000 mm	UB713	⊗ 1000 (h) x 2000 (w) x 130 (d) mm
Wall Monsoon 3000 mm	UB714	⊗ 1250 (h) x 3000 (w) x 130 (d) mm
Tensioner with hook	FX804-B	

Tool-free frame assembly



Custom made sizes available upto 5m in length

Monsoon



Easy to assemble on location thanks to its push-fit tubes system, this 'A' frame banner is ground pegging for extra-stability.

Material: Aluminium tubes (25 mm), plastic connectors

Graphic area : Single or Double-sided

Graphic attachment : Eyelets and looped bungee cords

Wind resistance: Up to 39 km/h

Monsoon 2500 mm	UB707-C	⊗ 1000 (h) x 2500 (w) x 640 (d) mm
Monsoon 3000 mm	UB711-C	⊗ 1250 (h) x 3000 (w) x 795 (d) mm



Supplied with ground pegs

Exist in 3 dimensions

Stowaway



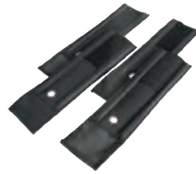
Extremely portable and lightweight, this flexible banner pops out in seconds to form it's oval shape. Tool-free assembly.

- Material:** Sprung steel pole
- Graphic area :** Double-sided
- Graphic attachment :** Elasticated pole pocket
- Ground fixing :** 4 pegs (included)

Stowaway 1400 mm	UB736-03A	Ⓞ 700 (h) x 1420 (w) x 400/480 (d) mm
Stowaway 1700 mm	UB736-02A	Ⓞ 850 (h) x 1720 (w) x 400/480 (d) mm
Stowaway 2000 mm	UB736-01A	Ⓞ 1000 (h) x 2020 (w) x 400/480 (d) mm



Pack away into a small carry bag



Hook and loop stability straps

Instantaneous opening

Rainbow



Ultra compact promotional external display, lightweight and robust when pegged into soft ground. Flexible rods allow movement in the wind delivering maximum performance.

- Material:** Fibreglass pole, plastic end moulding
- Graphic area:** Double-sided
- Graphic attachment:** Elasticated pole pocket black or white
- Ground fixing:** 4 pegs (included)

Rainbow Large	RNB-03	Ⓞ 1219 (h) x 2438 (w) x 609 (d)
---------------	--------	---------------------------------



Complete with carry bag

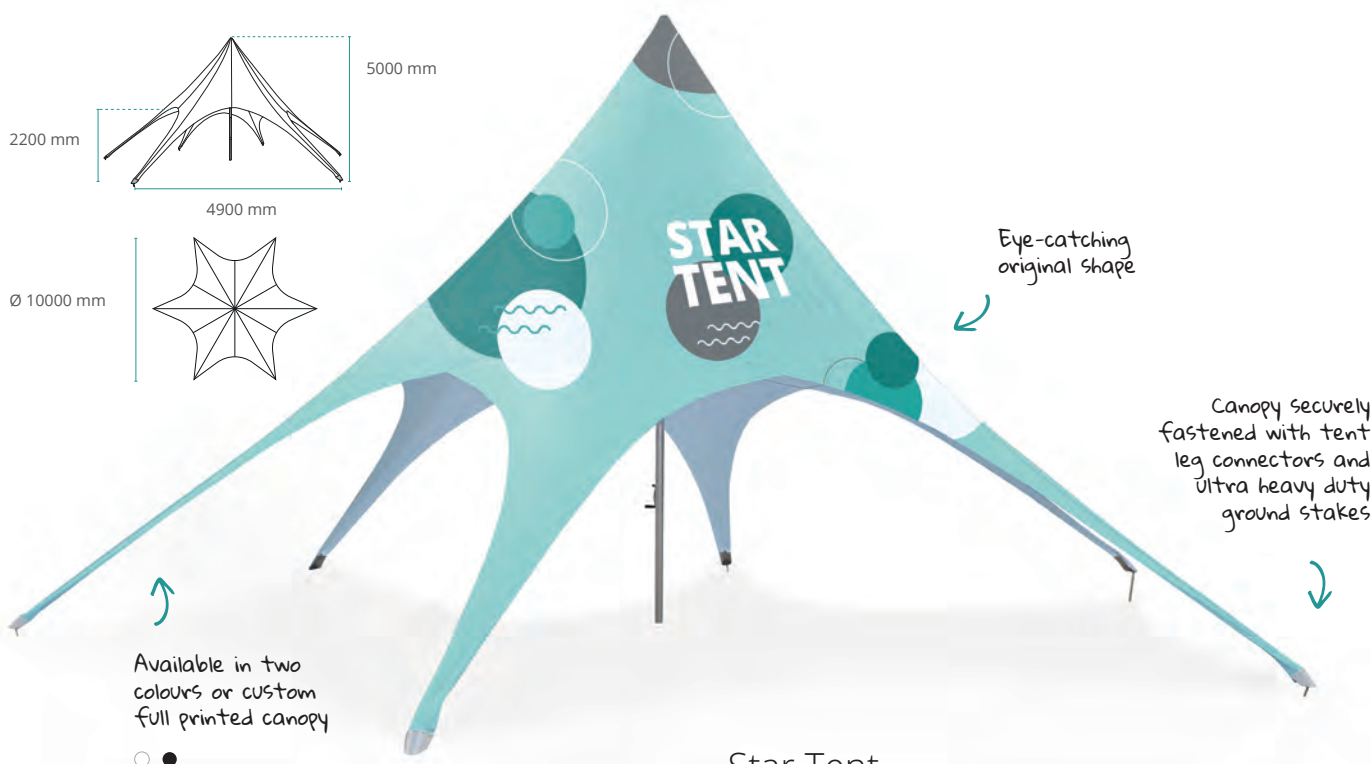
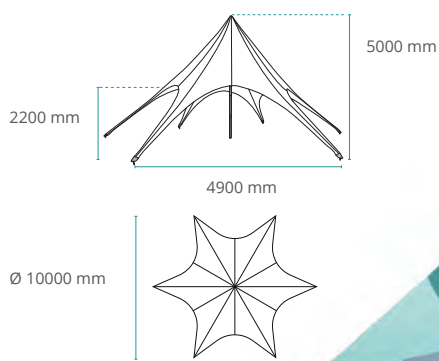


Side arms attach together using hook and loop





Get noticed in a crowd with impressive displays !



Eye-catching original shape

Canopy securely fastened with tent leg connectors and ultra heavy duty ground stakes

Available in two colours or custom full printed canopy



Star Tent



6 sided star tent supported with a telescopic pole providing a huge area for branding and plenty of shelter for your guests. Custom full printed canopy optional extra.

Material:	Aluminium
Graphic area:	Single-sided
Graphic attachment:	Pegged
Wind resistance:	Up to 45 km/h
Bag:	2 (included)

Star Tent Kit:	ST510-XAF	⊕ 5000 (h) x 10000 (w) x 1000 (d) mm
Canopy	ST510-CTW/B	Colours: White / Black

Frame and fixings come in bags



Supplied with 6 ground stakes



Crank handle



Base pole support



Wire rope setting-out guide

Zoom Tent



Lightweight aluminium tent frame with umbrella system. Folds and unfolds in minutes without tools. Dress it up with optional standard colour or custom full printed canopy, full and half wall.

- Material:** Aluminium frame, plastic joins
- Graphic area :** Double-sided (Wall, Half wall) / Single-sided (Canopy)
- Graphic colours :** White - Black - Blue - Red (Standard) / Full Graphic (Optional)
- Graphic attachment :** Hook and loop / Pocket (Half wall)
- Wind resistance:** Up to 29 km/h
- Ground fixing :** Pegs and ropes (included)
- Bag :** Wheeled Standard

Zoom Tent Frame 2x2	ZT22-XAF	⊕ 3160 (h) x 2000 (w) x 2000 (d) mm
Zoom Tent Frame 3x3	ZT33-XAF	⊕ 3160 (h) x 2920 (w) x 2920 (d) mm
Zoom Tent Frame 3x4.5	ZT34.5-XAF	⊕ 3160 (h) x 4300 (w) x 2920 (d) mm
Zoom Tent Frame 3x6	ZT36-XAF	⊕ 3160 (h) x 5800 (w) x 2920 (d) mm
Canopy	ZTXX-CTB/K/R/W	Colours : White / Black / Blue / Red
Full Wall	ZTXX-FWB/K/R/W	Colours : White / Black / Blue / Red
Half Wall	ZTXX-HWB/K/R/W	Colours : White / Black / Blue / Red

Accessories :

8 kg weight	ZT-BASE
2-3 m half wall mounting bar	ZT33-MTB
Zoom Tent connector	ZT-TJC
Zoom flag clamp	ZT-FCA



Ideal for markets, sporting events and receptions

Available in four colours or custom full printed canopy



Add extra visibility by attaching a flag

Easy to collapse and pack away



Zoom Tent Eco



Cost effective steel tent frame. White powder coated finish. Folds completely into portable wheeled carry bag. Full printed canopy optional extra.

- Material:** Steel frame, plastic joins
- Graphic area :** Single-sided
- Graphic colours :** White (Standard)
- Graphic attachment :** Hook and loop
- Wind resistance:** Up to 29 km/h
- Ground fixing :** Pegs and ropes (included)
- Bag :** Wheeled Standard

Zoom Tent Eco 3x3	FD33-SQF	⊕ 3315/3415/3510 (h) x 3310 (w) x 3310 (d) mm
Wall	FD33-FWW	Colours: White
Canopy	FD33-CTW	Colours : White

shades and protects up to five people



Collapsible frame



Bora Tent



Inflatable tent offers a fantastic 'canvas' for visual advertisements whilst providing shelter from the elements.
Trapped air technology: silent and free-standing once inflated.

- Material:** TPU, Polyester inner coat
- Graphic area:** Single-sided
- Graphic colours:** Blue - White - Black - Red (Standard)
Full Graphic (Optional)
- Graphic attachment:** Zip system (Standard) / Hook and Loop (Full graphic)
- Ground fixing:** Pegs (optional)
- Wind resistance:** Up to 39km/h
- Bag:** Standard

Tent frame	INF3-2Z	⊙, 2450 (h) x 3200 (w) x 3200 (d) mm
Canopy	INF3-CZ-W/BL/B/R	Colours : Blue / White / Black / Red
Side Wall	INF3-WA-W/BL/B/R	Colours : Blue / White / Black / Red

Accessories :

Hand pump	INF3-PM
Electric pump 400w	INF3-PE4EU
Plastic Tent pegs (x20)	UI00853-20
Metal Tent Pegs (x20)	UI00854-20

Full Graphic canopy printing option

Available in three colours or custom full printed options



Inflatable structure



Complete with carry bag



Bora Column



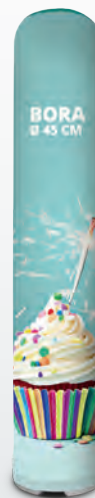
Get noticed in a crowd with the impressively tall 2.4 m graphic of this inflatable column.
Trapped air technology: silent and free-standing once inflated.

- Material:** PVC column, plastic base
- Graphic area:** 360°
- Graphic attachment:** Hook and loop
- Ground fixing:** 4 pegs (included)
- Wind resistance:** 15-24 mph (if pegged)
- Bag:** Optional extra

Bora Column Kit	INFLCOL-220	⊙, 2390 (h) x 460 (Ø) mm
-----------------	-------------	--------------------------

Accessories :

Hand pump	INF3-PM
Electric pump 400w	INF3-PE4EU
Carry bag	AB-INFLCOL



Optional pumps



Plastic water base



Two possible finishes: standard or full graphic

Sunrise Square Parasol



Parasol combines marketing with functionality. Telescopic pole for ease of transportation & adjustable height. Automatic locking system once opened.

- Material:** Powder coated steel
- Graphic area:** Single-sided
- Opening:** Clamp
- Wind resistance:** Up to 29 km/h (with optional cement base)

Sunrise Square Parasol with 20 kg cement base	UU-SB	📏 2040-2740 (h) x 2000 (w) x 2000 (d) mm
---	-------	--



Clamp opening and closing



Automatic locking



∅ 34/35 mm



Pole carry bag

Perfect for summer advertising

Sunrise Circular Parasol



A great addition to any external event creating maximum impact delivering your brand message whilst sheltering you from the elements.

- Material:** Powder coated steel
- Graphic area:** Single-sided
- Opening:** Handle
- Wind resistance:** Up to 29 km/h (with optional cement base)

Sunrise Circular Parasol with 20 kg cement base	UU-CB	📏 2500 (h) x 2660 (∅) mm
---	-------	--------------------------



Winding handle



Safety chain and pin



∅ 38 mm



POS Signage

Whether you are welcoming visitors or pointing the way, choosing the right signage is an important way of capturing attention.

We have a wide range of professional signage systems to choose from, including indoor, wall and poster frames, as well as free-standing and portable units for all your needs.



It is essential that Display Solutions match your interiors.

We have a comprehensive portfolio of Signage Solutions suitable for different settings such as: corporate office interiors, reception areas, public spaces as well as commercial, point of sale and retail environments.

Our versatile display solutions have a range of quality components for easy installation and a wide choice of fixing options for wall or ceiling suspension where required. They are also available in different finishes that perfectly match surroundings.



Before Choosing Your Display Solution, Please Consider the Following:

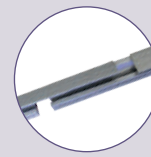
1. Do you need Free-Standing, Wall Mounted or Hanging Signage?
2. Does your display need to be printed or customised at all?
3. Does your signage need to be illuminated?
4. Do you plan to incorporate a device into the display like an LCD screen or iPad?

Our specialist Modular Solutions ranges Twista and Strata are made to order, with a wide range of fixing options and finishes to blend perfectly into your environment.

The Advantages of our Range



Contemporary Designs



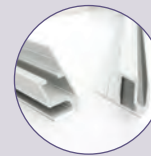
Custom Sizes and Colours



Quick and Easy Installation



Simple Graphic Attachment



Lightweight and Durable



Lockable for Security



Twista Lite



Easy to use «snap action» poster rail. Smart modern design. For use with a wide range of media up to 300 microns. Custom sizes available on request, up to 3100 mm.

Material :	Aluminium (rail), plastic (end caps, hooks)
Colour:	Grey
Mounting :	Wall / Ceiling
Graphic area :	Single or Double-sided
Graphic attachment :	Snap rail

Kit 500 mm*	TWLHR-500	⊖ 31 (h) x 500 (w) x 12 (d) mm
Kit 600 mm*	TWLHR-600	⊖ 31 (h) x 600 (w) x 12 (d) mm
Kit 800 mm*	TWLHR-800	⊖ 31 (h) x 800 (w) x 12 (d) mm
Kit 850 mm*	TWLHR-850	⊖ 31 (h) x 850 (w) x 12 (d) mm
Kit 900 mm*	TWLHR-900	⊖ 31 (h) x 900 (w) x 12 (d) mm
Kit 1000 mm*	TWLHR-1000	⊖ 31 (h) x 1000 (w) x 12 (d) mm
Kit 1200 mm*	TWLHR-1200	⊖ 31 (h) x 1200 (w) x 12 (d) mm
Kit 1500 mm*	TWLHR-1500	⊖ 31 (h) x 1500 (w) x 12 (d) mm
Kit 2000 mm*	TWLHR-2000	⊖ 31 (h) x 2000 (w) x 12 (d) mm
Kit 2500 mm*	TWLHR-2500	⊖ 31 (h) x 2500 (w) x 12 (d) mm
Kit 3000 mm*	TWLHR-3000	⊖ 31 (h) x 3000 (w) x 12 (d) mm
3100 mm (rail only)	TWLHR-3100	

*Kit includes 2 rails with end caps and 2 hooks



Very cost-effective
snap-action
solution



Rail end caps



Remove caps, open rail,
insert graphics, clamp
shut, replace caps



Sucker VH003



HOOK-S

Strata System



Get a new perspective to your interior display. The Strata system is a versatile cable display solution with a choice of fixing options.

With a wide range of quality aluminium components for wall or ceiling suspension, Strata is available in silver satin or chrome finish for a stylish look.



Fastens from floor to ceiling ↘



↖
Poster holder

↖
Perfect to hold plexiglas panel



1 Strata Lite Stand-offs

- Suitable for 2-10 mm thick substrates
- Choice of two diameters: 19 mm and 12 mm
- Quality aluminium components
- Available in satin or chrome finish
- Supplied in packs of four

Ø19 mm Satin	SP-SO1902
Ø19 mm Chrome	SP-SO1901
Ø12 mm Satin	SP-SO1202
Ø12 mm Chrome	SP-SO1201



2 Stand-offs

- Suitable for 2 -20 mm thick substrates depending on diameter used
- 16 mm diameter stand-offs are suitable for substrates between 2 and 8 mm thick
- 25 mm diameter stand-offs are suitable for substrates between 5 and 20 mm thick
- Choice of rail or screw fix options

Ø25 mm Large - Rail	PO101
Ø25 mm Large - Screw	PO102
Ø25 mm Medium- Rail	PO118
Ø25 mm Medium - Screw	PO117
Ø16 mm Small - Rail	PO104
Ø16 mm Small - Screw	PO105



3 Acrylic Poster Holder

- Acrylic poster holders have wings to take panel support fixings
- Available landscape or portrait

A1	AH411L/P
A2	AH412L/P
A3	AH413L/P
A4	AH414L/P
A5	AH415L/P



4 Double Panel Support

- 360° rotating feature for multi-angle fixing
- PO122 suitable for 5 mm thick substrates and A4/A5 poster holders
- PO121 suitable for 7 mm thick substrates and A1, A2 and A3 poster holders

PO122	⊙, 20 (h) x 10 (Ø) mm
PO121	⊙, 43 (h) x 16 (Ø) mm



5 Panel Supports

- PO113 suitable for 5 mm thick substrates and A4/A5 poster holders
- PO112 suitable for 4 mm thick substrates and A1, A2 and A3 poster holders

PO113	⊙, 15.5 (h) x 10 (Ø) mm
PO112	⊙, 20.5 (h) x 16 (Ø) mm



6 Rotating Edge Stand-offs

- Eliminate the need for an aperture in the substrate
- Suitable for 2-10 mm thick substrates in rail or screw options
- Distance from wall or ceiling 18.5mm approx.

PO119	⊙, 34 (h) x 16 (Ø) mm
PO120	⊙, 34 (h) x 25 (Ø) mm



7 Compact Variable Wall Plate

- 180° variable fixing
- 360° free moving or lockable
- Suitable for fixing to walls or ceilings

PO106	⊙, 25 (h) x 16 (Ø) mm
-------	-----------------------



8 Compact Variable Cable Fixing

- 180° variable fixing
- Choice of rail fix or screw fix options
- Cannot be used with PO110 cable kit

PO107 (Rail)	⊙, 25 (h) x 16 (Ø) mm
PO108 (Screw)	⊙, 25 (h) x 16 (Ø) mm



9 Aluminium Rail Screw Fixing

- Fix to ceiling or walls – cable fixings slot in and screw in to place
- Custom sizes available
- Complete with moulded end caps

Rail 1 m	PR102
Rail 2 m	PR101



10 Adjustable Fixing Cable

- Supplied with rail fixings
- Can be fixed wall to wall, floor to ceiling, direct to wall - extra components required

PO109	⊙, 4000 (w) x 1,5 (Ø) mm
-------	--------------------------



11 Floor to Ceiling Fixing Cable

- Adjustable cable kit, supplied with screw
- Not suitable for compact variable fixings

PO110	⊙, 4000 (h) x 1,5 (Ø) mm
-------	--------------------------



12 Insert for Screw Fixing

- Suitable for PO109 Strata Cable Kits and Stand-off components

Insert Screw fixing	PO116
---------------------	-------



13 Insert Rail Fixing

- Suitable for PO109 Strata Cable Kits and Stand-off components

Insert Rail Fixing	PO115
--------------------	-------

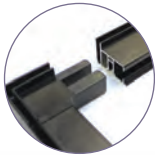
Arty



This versatile picture frame offers two alternative graphic options, to create a seamless canvas style image simply wrap around or opt for the stylish black frame with SEG graphic option.

- Material:** Aluminium
- Profile depth:** 22 mm
- Profile colour:** Black
- Assembly:** Push-fit connector
- Graphic attachment:** SEG 3 mm / Corner fixing clips
- Graphic area:** Single-sided
- Mounting:** Wall

Arty A3	AWF-A3	⊙ 420 (h) x 297 (w) x 22 (d) mm
Arty A2	AWF-A2	⊙ 594 (h) x 420 (w) x 22 (d) mm
Arty A1	AWF-A1	⊙ 841 (h) x 594 (w) x 22 (d) mm
Arty A0	AWF-A0	⊙ 1189 (h) x 841 (w) x 22 (d) mm



Tool-free assembly



Fabric graphic with silicone edge gasket (SEG)



Tension graphic fitting option



Corner tension bracket for easy wall mounting solution

Wrap around graphic option



Optional SEG graphic fitting with visible extrusion



Mounts easily straight onto walls by self drilling



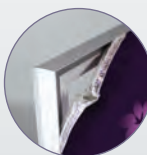
Vector Quick Fix



Lightweight and extremely low profile to create custom frame for decoration or retail applications. Extrusion can be cut to fit in a bag for easy transportation.

- Material :** Anodised aluminium
- Profile depth :** 20 mm
- Profile colour :** Silver / Black
- Assembly :** Screw-in bracket
- Graphic attachment :** SEG 3 mm
- Graphic area :** Single-sided
- Mounting :** Wall / connect to a shell scheme with bracket fixing (optional)

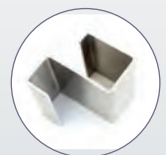
Vector Quick Fix - wall mounted	VWQF-CUSTOM	⊙ Custom size
Vector Quick Fix - suspended	VHQF-CUSTOM	⊙ Custom size
Wall mounted 841 x 1189 mm	VWQF-A0	⊙ 841 (h) x 1189 (w) x 20 (d) mm
Wall mounted 594 x 841 mm	VWQF-A1	⊙ 594 (h) x 841 (w) x 20 (d) mm
Wall mounted 420 x 594 mm	VWQF-A2	⊙ 420 (h) x 594 (w) x 20 (d) mm
Wall mounted 297 x 420 mm	VWQF-A3	⊙ 297 (h) x 420 (w) x 20 (d) mm
Wall mounted 700 x 700 mm	VWQF-07x07	⊙ 700 (h) x 700 (w) x 20 (d) mm
Wall mounted 1000 x 1000 mm	VWQF-10x10	⊙ 1000 (h) x 1000 (w) x 20 (d) mm
Wall mounted 1000 x 2000 mm	VWQF-10x20	⊙ 1000 (h) x 2000 (w) x 20 (d) mm



Fabric graphic with silicone edge gasket (SEG)



Assembly with screw-in brackets



Optional mounting bracket LN134 for shell scheme fixing





Ø 1000 mm

Ø 700 mm



Perfect for interior decoration

Ø 400 mm



Complete with wall fixings



Vector Slim Circular



Create a smooth and sleek effect with this lightweight rounded wall frame. With a range of standard sizes and custom options available, you don't ever have to be square again.

- Material:** Aluminium
- Profile depth:** 20 mm
- Profile colour:** Silver
- Assembly:** Screw-in connector
- Graphic attachment:** SEG 3 mm
- Graphic area:** Single-sided
- Mounting:** Wall

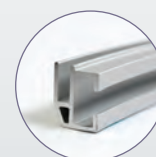
Ø 400 mm	VWFC-400	⊘_ 400 (Ø) mm
Ø 700 mm	VWFC-700	⊘_ 700 (Ø) mm
Ø 1000 mm	VWFC-1000	⊘_ 1000 (Ø) mm
Custom size	VWFC-CUSTOM	⊘_ Custom



Easy assembly



Fabric graphic with silicone edge gasket (SEG)



20 mm aluminium profile

Vector LED 30mm



Cost effective backlit LED frame, with ultra thin profile. Perfect for small format displays, sleek design that creates an amazing visual impact bringing your brand to life.

Material:	Aluminium
Profile depth:	30 mm
Profile colour:	Silver
Assembly:	Screw-in bracket
Graphic attachment:	SEG 3 mm
Graphic area:	Single-sided
Eclairage:	LED backlit included
Mounting:	Wall

Vector LED 30 mm	VLB30-CUSTOM	📏 Custom size
Wall mounted LED 2000 x 1000 mm	VLB30-20X10	📏 2000 (h) x 1000 (w) x 30 (d) mm
Wall mounted LED 1000 x 1000 mm	VLB30-10X10	📏 1000 (h) x 1000 (w) x 30 (d) mm
Wall mounted LED 600 x 600 mm	VLB30-06X06	📏 600 (h) x 600 (w) x 30 (d) mm
Wall mounted LED 1189 x 854 mm	VLB30-11X08	📏 1189 (h) x 854 (w) x 30 (d) mm
Wall mounted LED 854 x 594 mm	VLB30-08X05	📏 854 (h) x 594 (w) x 30 (d) mm



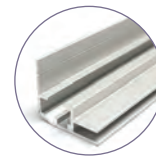
Ideal for interior decoration



consistent lighting across the graphic



Linkable LED lightning system



Aluminium profile



Screw-in bracket

Vector LED 75mm



Large format wall mounted edgelit lightbox, creating even light across a wide area to illuminate your chosen graphic helping you stand out from the crowd.

Material :	Aluminium
Profile depth :	75 mm
Profile colours :	Black / White / Silver
Assembly :	Screw-in bracket
Graphic attachment :	SEG 3 mm
Graphic area :	Single-sided
Eclairage :	LED backlit included
Mounting :	Wall / Free-standing (with optional flat feet)

Vector LED 75 mm	VLB75-CUSTOM	📏 Custom size
Wall mounted LED 800 x 1500 mm	VLB75-08X15	📏 800 (h) x 1500 (w) x 75 (d) mm
Wall mounted LED 1000 x 2000 mm	VLB75-10X20	📏 1000 (h) x 2000 (w) x 75 (d) mm
Wall mounted LED 1500 x 1500 mm	VLB75-15X15	📏 1500 (h) x 1500 (w) x 75 (d) mm
Wall mounted LED 2000 x 2000 mm	VLB75-20X20	📏 2000 (h) x 2000 (w) x 75 (d) mm

Accessories :

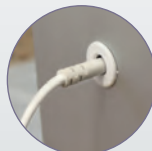
Flat foot Retail (unit)	FX295	📏 5 (h) x 180 (w) x 550 (d) mm
-------------------------	-------	--------------------------------



LED 360 mm



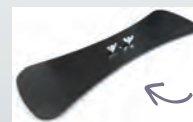
Simple assembly with mitered profiles and corner brackets



Cabling system



Profile and feet available in 3 colours :



Wall-mounted or free-standing use with flat feet (optional extra)

Vector LED 75 mm Wall u.motion



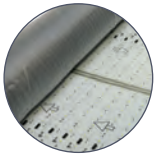
New landscape format video wall equipped with digital signage technology and integrated in a 75 mm Vector frame. Dynamize your communications on walls thanks to the various animations. Also available in totems.

- Material:** Aluminium
- Profile depth:** 75 mm
- Profile colour:** Silver (black / white optional)
- Assembly:** Screw-in bracket, Allen key
- Graphic attachment:** SEG 3 mm
- Graphic area:** Single sided
- Utilisation:** Wall
- Bag:** Tube bag included with each LED curtain



Wall frame in landscape format 1 x 2 m!

Vector LED 75 mm wall u.motion	VLB75-UMOT-10X20	1000 (h) x 2000 (w) x 75 (d) mm
--------------------------------	------------------	---------------------------------



LED curtain included



Control unit



Key usb



Tube bag included



illuminate the elements that you want

Teva



Telescopic and wheeled multi-functional mobile LCD/LED/Plasma stand*. Black finish. Integrated cable management system inside pole uprights.

- Material :** Steel, plastic (shelf)
- Screen sizes* :** 37"-65" (45 kg load max)
- AV Shelf :** 1 (4.5 kg load max)
- Camera tray:** 1 (4.5 kg load max)
- Wheels :** 4

Teva	LN250	1030-1530 (h) x 850 (w) x 730 (d) mm
------	-------	--------------------------------------

* TV screen and Video/AV equipment are not included and not available to purchase



Smooth rolling braked castors

Height-adjustable camera tray and monitor for maximum visibility



Screen size : 37" - 65"



Comes with camera tray and AV accessories shelf



1030 - 1530 mm



U.digital - A board



One of the most aesthetic solutions on the market: designed with rounded corners and full height glass. The digital A board is equipped with wheels and a handle for easy movement. This easel will broadcast your messages in an interactive way. Available in black or white format.

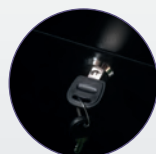
- Screen size:** 43 inches (16:9)
- Resolution:** 1080 x 1920 (High definition)
- Compatibility:** All video and image formats
- Operations:** Android System
- Connectability:** 2 USB ports, 1 HDMI, Wifi
- Use:** By program on USB key or by CMS

U.digital - A board black	UDIG-DAB-43-B-01	📏 1500 (h) x 605 (w) x 580 (d) mm
U.digital - A board white*	UDIG-DAB-43-W-01	📏 1500 (h) x 605 (w) x 580 (d) mm

*to order.



Integrated castors



Secure access to the electronic box

*Content Management System.



Different types of content: mix image and video!



Add content via USB or CMS*



Built-in speakers



An aesthetic and transportable digital solution



Telescopic Universal Tablet Holder*



Versatile telescopic tablet stand. Security screws and lock make the unit both durable and theft resistant. For extra stability, the base can be bolted to the floor.

- Material:** Anodised aluminium pole, steel black base
- Locking:** Security screws/Allen key (included)
- Tablet positioning:** Portrait or Landscape
- Tablet size:** 20,5-27,5 (w) x 13,5-19,5 (h) x 1 (d) cm
- Ground fixing:** Bolt (included)

Telescopic Universal Tablet holder	IPS-003-B	Portrait: 795-1225 (h) x 440 (w) x 335 (d) mm Landscape: 735-1175 (h) x 440 (w) x 335 (d) mm
------------------------------------	-----------	---



Adjustable height



Lockable

Design iPad Holder *



Design and secure housing frame that can be mounted onto a counter, wall or a Linear post with 360° iPad Holder option.

- Material:** Aluminium, steel
- Locking:** Security screws/Allen key (included)
- Tablet positioning:** Portrait or Landscape, or 360° with mount option
- Tablet size:** All iPad except Mini and Pro models*

White Frame	IPAD-CHU-W	310 (h) x 225 (w) x 20 (d) mm
Black Frame	IPAD-CHU-B	310 (h) x 225 (w) x 20 (d) mm
Black Frame + 360° mount	IPAD-SH-360B	310 (h) x 225 (w) x 95 (d) mm



Sleek rounded corners



Can be mounted onto a counter, wall or a post



Frame with optional 360° mount

*Please note all tablets and iPads are not included and not available to purchase

Formulate Universal Tablet Holder*



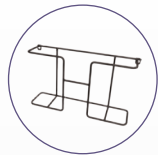
Lightweight free-standing tablet holder that can host universal tablet sizes thanks to its adjustable bracket. Modern and design shape. Optional literature holders.

Material:	Ø30mm aluminium bungee tubes, metal base, plastic connector
Locking:	Security screws/Allen key (included)
Tablet positioning:	Portrait or Landscape
Tablet size:	8.6"-13.7" (22.2-35.5cm) diagonal / 0.9cm thickness
Graphic option:	Double-sided fabric graphic (optional)
Ground fixing:	5.2kg Weighted base (included)

Frame	FORM-UNI-TAB-01	⊙, 1230 (h) x 350 (w) x 640 (d) mm
Black literature holder rack (use two max) optional extra	FORM-UNI-TAB-LIT-B	⊙, 155 (h) x 350 (w) x 75 (d) mm



Internal reinforcement



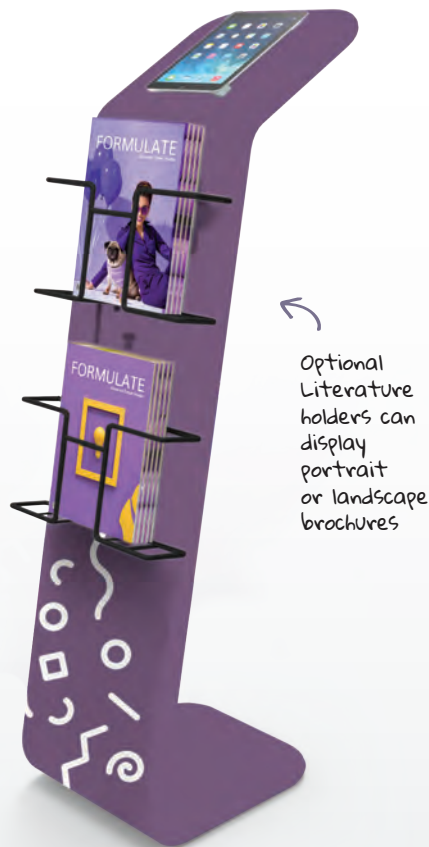
Black literature holder rack (optional)



Complete with padded carry bag



Adjustable tablet holder bracket



Optional Literature holders can display portrait or landscape brochures

5.2kg Weighted base plate included for stability



Linear Media post



A robust, handy and very versatile graphic and literature holder which allows you to display information and promotion at the same time.

Material:	Anodised aluminium post, steel dome base
Colour:	Silver
Documents sizes:	A4
Pockets:	3 - included
Graphic:	Single-sided
Graphic:	Optional extra - ideal with 5 mm foamed PVC
Transport:	Carry bags (optional extra)

Linear Media Post	LK026-001	⊙, 2060 (h) x 523 (w) x 450 (d) mm
-------------------	-----------	------------------------------------

Accessories :

Base bag	AB910
Pole bag	AB293



CNC available for custom shaped graphics (Optional extra)

Adjustable A4 Literature holders



Sentry



'Snap-action' free-standing poster frame that is ideally suited to information display. Head rotates for either portrait or landscape format literature.

Material :	25 mm aluminium profile, clear PVC protection sheet
Colour:	Anodised silver finish, chromed corners
Mounting :	Free-standing
Frame positioning:	Portrait or Landscape
Graphic option:	Suitable for substrates up to 420 microns
Graphic attachment :	Snap rail

Sentry A3	SL103	📏 1075 (h) x 245 (w) x 326 (d) mm
Sentry A4	SL104	📏 1005 (h) x 245 (w) x 326 (d) mm



Trappa Frame



Very easy-to-use 'snap-action' poster frame to update quickly and often messages. Mitred corner.

Material :	25 mm aluminium profile, clear PVC protection sheet
Colour:	Anodised silver finish
Mounting:	Wall*
Frame positioning:	Portrait or Landscape
Graphic option:	Suitable for substrates up to 420 microns
Graphic attachment :	Snap rail

Trappa A4	AT401-C	📏 328 (h) x 241 (w) x 13 (d) mm
Trappa A3	AT402-C	📏 451 (h) x 328 (w) x 13 (d) mm
Trappa A2	AT403-C	📏 625 (h) x 451 (w) x 13 (d) mm
Trappa A1	AT404-C	📏 872 (h) x 625 (w) x 13 (d) mm
Trappa A0	AT405-C	📏 1220 (h) x 872 (w) x 13 (d) mm

* screws not supplied



Basics Leader



Basics range for retractable barrier system, ideal for use in retail outlets and airports to define queue guidance.

Material :	Steel, aluminium, plastic
Post and base colours:	Black / Silver
Belt colours :	Red / Grey / Black

Basics Leader Kit (Black post - Red/Grey/Black Belt)	SP-800B-R/G/B	📏 910 (h) x 2000 (w) x 350 (d) mm
Basics Leader Kit (Silver post - Red/Grey/Black Belt)	SP-800S-R/G/B	📏 910 (h) x 2000 (w) x 350 (d) mm



Spiral Plinth



Portable collapsible counter that assemble in seconds without the need for tools thanks to its twist and lock system. Add interactivity with optional iPad holder.

Material :	Steel, plastic, wood
Assembly :	Self-locking system
Shelves :	2 (max load 4 kg)
Graphic option :	Acetate panels (included) / 1-2 mm PVC panels (optional)
Graphic attachment:	Mag tape (included)
Transport :	Wheeled padded bag

Spiral Plinth	UB710	📏 1070 (h) x 580 (Ø) mm
---------------	-------	-------------------------

Accessories :

iPad Holder*	UB710-IPDM-B/S/W	Colours: Black / Silver / White
--------------	------------------	---------------------------------

*Please note all tablets and iPads are not included and not available to purchase



iPad holder*
optional extra



Printed
graphics
example



Fully collapsible

Spiral Display Tower



Fully collapsible tower that locks automatically once in place. Ideal for showcasing your products on shelves. Custom branding by replacing the acetate panels by your own graphics.

Material :	Steel, plastic
Assembly :	Self-locking system
Shelves :	4 (max load 4 kg)
Lighting :	20 Watt - 12 Volts
Graphic option :	Acetate panels (included) / 1-2 mm PVC panels (optional)
Graphic attachment:	Mag tape (included)
Transport :	Wheeled padded bag

Spiral Display Tower	UB710-002	📏 2070 (h) x 560 (Ø) mm
----------------------	-----------	-------------------------

Top mounted
downlighter

Twist and lock
assembly system



Comes with
wheeled padded
bag

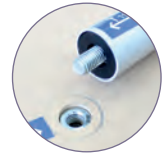
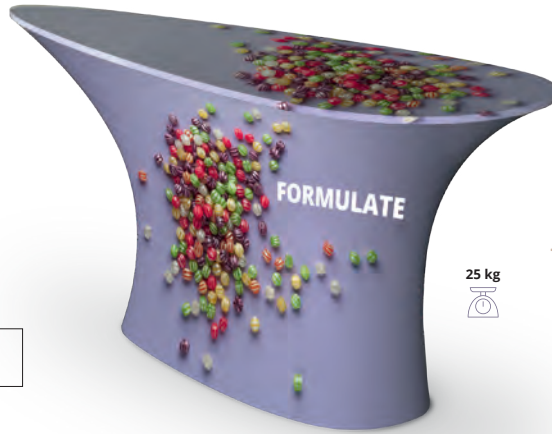
Formulate Oval Table



A maximum branding exposure upto furniture. Dress your table up with optional stretch printed table throw pillow to perfectly fit the frame.

Material : Ø30 mm aluminium tubes, MDF top and base
Graphic area : 360°
Assembly: Push-fit buttons, screw

Oval Table	FMLT-TS-06	950 (h) x 1600 (w) x 520 (d) mm
------------	------------	---------------------------------



Tool-free assembly



Foldable top and base

Formulate Round Table



Popular table shape for reception. Welded base for extra stability. Display your message at 360° angle with optional washable tension fabric graphic.

Material : Ø30 mm aluminium tubes, MDF top
Graphic area : 360°
Assembly: Push-fit buttons, screw

Round Table	FMLT-TS-01A	1000 (h) x 600 (Ø) mm
-------------	-------------	-----------------------

Full printed Graphic option



Numbered frame parts



Gala



Portable strong trestle folding table. Cover with an optional printed table cloth for a professional look, choose from traditional or fitted format.

Material : Polypropylene, metal
Graphic area : 360°
Assembly: Locking mechanism

Gala 1.8 m	FT-6A	Open : 730 (h) x 1805 (w) x 740 (d) mm Closed: 80 (h) x 900 (w) x 740 (d) mm
Gala 2.4 m	FT-8	Open : 730 (h) x 2403 (w) x 753 (d) mm Closed: 90 (h) x 1215 (w) x 753 (d) mm



Folds in half for easy transportation



Different table cloths available



Carry handle



Centre locking mechanism





← Raise your communication



Circular Formulate sign



Formulate suspended signs have been specially designed for easy and safe installation. This circular shaped communication medium is ideal to be seen from a distance.

- Material:** Aluminium tubes
- Tube diameter:** 30 mm
- Assembly:** Tool-free
- Shape:** Round
- Graphic fixation:** Zipped tension fabric graphic
- Graphic:** Double-sided
- Utilisation:** Suspended
Pitons included, Slings not included

Formulate circular 800	FORM-RNG-80	⊙ 800 (h) x 1500 (w) x 1500 (d) mm
Formulate circular 1000	FORM-RNG-100	⊙ 1000 (h) x 3000 (w) x 3000 (d) mm
Formulate circular 1500	FORM-RNG-150	⊙ 1500 (h) x 4500 (w) x 4500 (d) mm

Square Formulate sign



Formulate suspended signs have been specially designed for easy and safe installation. This square shaped communication medium is ideal to be seen from a distance.

- Material:** Aluminium tubes
- Tube diameter:** 30 mm
- Assembly:** Tool-free
- Shape:** Square
- Graphic fixation:** Zipped tension fabric graphic
- Graphic:** Double-sided
- Utilisation:** Suspended
Pitons included, Slings not included

Formulate square 800	FORM-SQU-80	⊙ 800 (h) x 1500 (w) x 1500 (d) mm
Formulate square 1000	FORM-SQU-100	⊙ 1000 (h) x 3000 (w) x 3000 (d) mm
Formulate square 1500	FORM-SQU-150	⊙ 1500 (h) x 4500 (w) x 4500 (d) mm

Vector 125 mm LED Sign



To attract and stand out, opt for a rectangular sign with double-sided lighting combined with an original graphic design. Available in 3 standard formats.

- Material:** Aluminium 125 mm
- Colour:** Silver (Black / White optional)
- Assembly:** Screw-in bracket
- Format:** Standard or custom
- Graphic fixation:** Slings (cables not included)
- Graphic:** Double sided
- Lighting:** Tangential LED



Vector 125 mm LED - 250	VLBH125-PAN-250	⊙ 1000 (h) x 2500 (w) x 125 (d) mm
Vector 125 mm LED - 350	VLBH125-PAN-350	⊙ 1000 (h) x 3500 (w) x 125 (d) mm
Vector 125 mm LED - 500	VLBH125-PAN-500	⊙ 1250 (h) x 5000 (w) x 125 (d) mm

Available in 3 standard formats. ↗

Counters

Designed for a wide variety of uses, our portable counters cater for almost any situation or occasion and are an ideal way to welcome your guests.

We have designed a comprehensive range of items in many shapes and sizes, most of which can support graphics that project your brand.





We provide counters for all budgets and requirements.

Our counters can serve as display surfaces, lecterns, data pods, workstations, display towers, columns and plinths and the variations of what you can do with them is infinite.

You can also increase your impact by adding height and visibility with a header kit or flag. Our Counters are simple and quick to build with tool-less construction, they are made in-house and can be made to order if customisation is required.

Before choosing your counter, please consider the following:

1. How many times will it be used? Occasionally or regularly?
2. Do you need to transport it? And how often?
3. Will you need storage for catalogues for example?
4. Do you need to host visitors or give a lecture?

Standard solutions...



Counter



Vector



Physique



Linear



Formulate/Modulate

... Customisable solutions



Custom sizes



Graphics



Tabletop colour

Pop-up Counta



A convenient lightweight pop-up counter that offers a substantial area to welcome your guests yet packs down for easy transportation in a reinforced D-shaped wheeled trolley case.

Material:	Aluminium, plastic, MDF
Assembly:	Self-locking magnetic
Collapsible:	Yes
Counter top:	Fold-able - Beech colour
Graphic attachment:	Magnetic hangers, bars and tape (included) Suitable for 440 microns min. substrate (optional extra)
Shelves:	4
Bag:	1 Wheeled trolley case

2x1	PUC21C-C	📏 985 (h) x 865 (w) x 400 (d) mm
2x2	PUC22C-C	📏 985 (h) x 1290 (w) x 465 (d) mm



Magnetic fixing



Wheeled trolley case



Quick and easy to assemble



Hop-up Counta



Durable lightweight hop-up counter, quick and easy to assemble with a single wrap around fabric graphic which stays on when collapsed and packed away. Perfect to welcome your guests.

Material:	Aluminium, plastic, MDF tabletop, polycarbonate shelf
Assembly:	Plastic locking arms
Collapsible:	Yes
Counter top:	Beech
Graphic attachment:	Hook and loop
Shelves:	One
Bag:	One wheeled carry bag

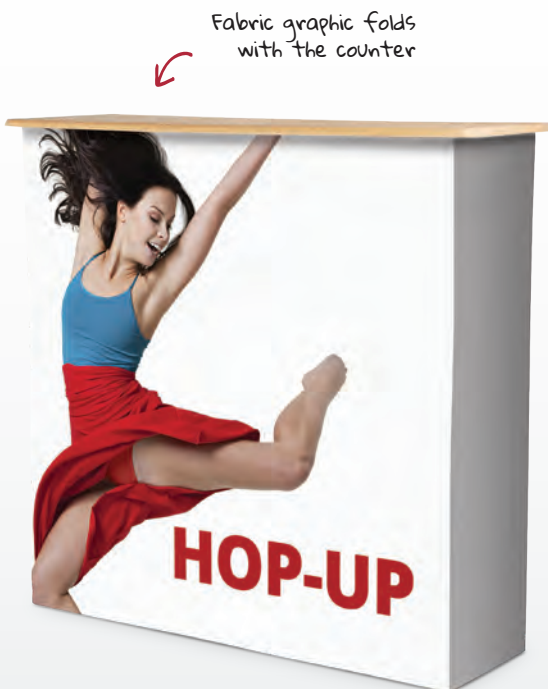
Hop-up	HU301-001-C	📏 1020 (h) x 1060 (w) x 360 (d) mm
--------	-------------	------------------------------------



Plastic locking arm



Wheeled carry bag



Fabric graphic folds with the counter

Shelf included



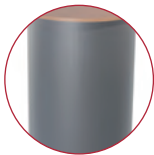
Basics Round Counter



Simple and effective basic counter – perfect for exhibitions and road shows. Reversible colour thermoformed top and base with grey corex fluted wrap.

- Material:** MDF tabletop/base, Corex wrap
- Assembly:** Push-fit - Tool-free
- Collapsible:** No
- Counter top:** Beech / black or Black / White - reversible
- Graphic attachment:** Hook and loop wrap
- Shelves:** No
- Bag:** Two carry bags - included

Basics Round Counter beech/black	PK923	926 (h) x 450 (Ø) mm
Basics Round Counter black/white	PK923-BLK	926 (h) x 450 (Ø) mm



Beech tabletop



Tabletops and bases are reversible



Carry bags



Cost effective counter solution

reversible counter



Basics Curved Counter



Stylish and functional Double-D-shaped counter. Simple to assemble making it ideal for any lounges or reception areas. Reversible colour thermoformed tops and bases with grey corex fluted wrap.

- Material:** MDF tabletop/base, Corex wrap
- Assembly:** Push-fit - Tool-free
- Collapsible:** No
- Counter top:** Beech / Black or Black / White - reversible
- Graphic attachment:** Hook and loop wrap
- Shelves:** 1 (in option)
- Bag:** Two carry bags - included

Basics Curved Counter beech/black	PK922	925 (h) x 910 (w) x 480 (d) mm
Basics Curved Counter beech/white	PK922-BLK	925 (h) x 910 (w) x 480 (d) mm

Accessories:

Shelf	PK922-SHELF-KIT	10 (h) x 853 (w) x 398 (d) mm
-------	-----------------	-------------------------------



Large tabletop in beech/black



Ideal for lounges or receptions



Shelf in option

SEG Counter



Collapsible display counter with self-locking magnetic assembly. Optional fabric Silicone Edged Graphic (SEG) fits easily into the channel for a perfect tension.

Material:	Aluminium, plastic, MDF tabletop/base
Assembly:	Self-locking magnetic
Collapsible:	Yes
Counter top:	Beech
Graphic attachment:	SEG 3mm
Shelves:	2
Bag:	One carry bag

SEG Counter	PUC21-SEG-BI	📏 990 (h) x 840 (w) x 365 (d) mm
-------------	--------------	----------------------------------

Curved textile counter



Attach graphic into SEG channel



Carry bag

Open back for ease of access to shelves



Embrace + LED Counter



Double-sided collapsible counter with aluminium frame for dressing with visual textile. Backlit graphics boost your brand messaging.

Material:	Aluminium, plastic, metal locking arms, MDF tabletop
Assembly:	Plastic frame
Collapsible:	Yes
Counter top:	White
Graphic attachment:	SEG 3 mm
Accessories:	LED lighting (included)
Bag:	Bag included

Embrace + LED Counter	EMB-PL-CNTR-LED	📏 1022 (h) x 1040 (w) x 400 (d) mm
-----------------------	-----------------	------------------------------------



360°

Foldable structure



Attach graphic into SEG channel

Modulate Counter



New patent-pending magnetic counter - increase your counter size by simply connecting multiple counters using magnetic elements.

- Material:** Ø 30mm Aluminium tubes, MDF tabletop/shelf
- Assembly:** Push-fit button
- Collapsible:** No
- Counter top:** Black
- Graphic attachment:** Zip system
- Shelves:** 1 (optional extra)
- Bag:** One padded carry bag, internal flap

Modulate Counter	FORM-MOD-CNTR	📏 1015 (h) x 800 (w) x 600 (d) mm
------------------	---------------	-----------------------------------

Accessories:

Shelf	FORM-MOD-CNTR-02	📏 9 (h) x 770 (w) x 571 (d) mm
-------	------------------	--------------------------------



Counters join by magnets only



Black laminate MDF tabletop included



Internal shelf optional extra

↪
from this...

to this - just using magnets - no tools required!!

Choose to have the tabletop visible or hidden



↪
Join multiple units together to create a larger counter, reception desk or bar area! (one graphic per counter)

Reception Bank Vector LED



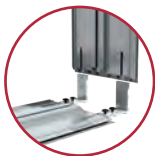
A simple, effective and economical solution to give visibility to your reception. Its double-sided finish will give impact to your communication.

Material:	Aluminium 150 mm, MDF tabletop
Assembly:	Screw-in bracket
Collapsible:	No
Counter top:	Beech / black / silver / white
Graphic attachment:	SEG 3 mm
Lighting :	Led strips included
Graphic:	Double-sided
Shelves:	No
Bag:	Bag included

Reception Bank Vector LED	VSRD150-120	📏 1030 (h) x 1250 (w) x 540 (d) mm
---------------------------	-------------	------------------------------------

Accessories:

Counter bag	ABVSS-04
Counter tabletop	AB916



Assembly of corner sections by means of a screw-on bracket



Fabric graphic with silicone edge gasket (SEG)



Pivoting Feet



4 colours available for the tabletop : ● ● ● ●



Twist out feet ↗

Vector Counter Straight LED 125 mm



Counter straight, backlit countertop with rounded corners for optimal and homogeneous Full Graphic rendering. Make your reception look good.

Material:	Aluminium 125 mm, MDF tabletop
Assembly:	Screw-in bracket
Collapsible:	No
Counter top:	Beech / black / silver / white
Graphic attachment:	SEG 3 mm
Etagère :	Optional shelf kit
Eclairage :	Led strips included
Bag:	One carry bag - optional extra

Vector Counter Straight LED 125 mm	VSCB125-100	📏 1015 (h) x 1040 (w) x 540 (d) mm
------------------------------------	-------------	------------------------------------

Accessories:

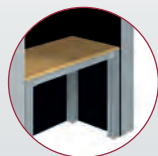
Shelf kit	VSCS125-100	📏 515 (h) x 732 (w) x 365 (d) mm
Counter bag	ABVSS-03	
Carry bag tabletop	AB914	



Assembly of corner sections by means of a screw-on bracket



LED Strip



Shelf Kit



Full graphic rounded corners



↗ seamless one-piece graphic

Vector Counter Straight



Robust counter built from modular Vector extrusions. Rounded corners for a seamless tension graphic. Available in custom sizes. Manufactured to order.

Material:	Aluminium, MDF tabletop/shelf
Assembly:	Cam locks and Allen key
Collapsible:	No
Counter top:	Beech / black / silver / white
Graphic attachment:	SEG 3 mm
Shelves:	1
Bag:	carry bags - optional extra

Vector Straight Counter 1000 mm*	VSCB	1015 (h) x 1040 (w) x 545 (d) mm
Vector Straight Counter 1000 mm with lockable door	VSCB-D	1015 (h) x 1040 (w) x 545 (d) mm porte: 975 (h) x 535 (w) mm
Vector Straight Counter 2000 mm	VSCB-2	1015 (h) x 2040 (w) x 545 (d) mm

*Reference not compatible with the addition of a door.

Accessories:

Tube bag (counter)	AB120AM
Carry bag (shelf and tabletop)	AB914



Attach graphic into SEG frame channel



Optional carry bag

Four colours available:



Back view: counters 2000 mm and 1000 mm with lockable door



Vector Counter Curved



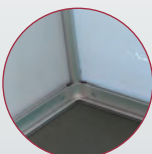
Strong and stylish finish counter built-in from modular Vector profiles system. Available in custom sizes. Manufactured to order.

Material:	Aluminium, MDF tabletop/shelf
Assembly:	Cam locks and Allen key
Collapsible:	No
Counter top:	Beech / black / silver / white
Graphic attachment:	SEG 3 mm
Shelves:	1
Bag:	Two carry bags - optional extra

Vector counter curved	VCCB	1015 (h) x 1340 (w) x 540 (d) mm
-----------------------	------	----------------------------------

Accessories:

Carry bag (shelf and tabletop)	AB916
Carry bag kit (counter)	AB120AC-KIT



Rounded corners



Carry bags

Stylish curved counter



Manufactured to order



4 colours available:



Linear Straight Counter



Solid and durable counter made from Linear posts, yet flat-pack for easy transportation. Recommended with 3-5mm thick PVC foamed board graphics (optional extra).

Material:	Anodised aluminium, MDF tabletop/base
Assembly:	Twist and lock system, tool-free
Collapsible:	No
Tablette/socle :	Beech / black / silver / white
Graphic attachment:	Magnetic (for 1mm substrate - optional extra) Infills panels (for 3-5mm substrate - optional extra)
Shelves:	1 (optional extra)
Bag:	One carry bag - optional extra

1000 mm (w)	LK029-001	📏 1010 (h) x 1000 (w) x 500 (d) mm
-------------	-----------	------------------------------------

Accessories:

Counter bag 1000 mm	AB112A
Internal shelf	PK8-S15



Linear Curved Counter



Stylish 30° or 45° curved counters made from Linear profiles. Available in Pro version with top shelf option, or in standard one. Recommended with 2mm thick PVC foamed board graphics (optional extra).

Material:	Anodised aluminium, MDF tabletop/base
Assembly:	Twist and lock system, tool-free
Collapsible:	No
Tablette/socle :	Beech / black / silver / white
Graphic attachment:	Magnetic (for 1mm substrate - optional extra) Infills panels (for 3-5mm substrate - optional extra)
Shelves:	1 (optional extra)
Bag:	One carry bag - optional extra

Standard 30°	LK028-001	📏 1010 (h) x 1025 (w) x 546 (d) mm
Pro 30°	LK028-002	📏 1010 (h) x 1025 (w) x 546 (d) mm

Accessories:

Carry bag for 30°	AB112A
Internal shelf	PK8-S15



Standard version



Pro version with acrylic shelf and stand-offs



Gear Edge Counter



Aluminium counter ideal for complimenting exhibition panel displays. Graphic panels are simple to change along with your promotion or message.

Material:	Aluminium, MDF tabletop
Assembly:	Fold-able (standard), Allen key if graphics change
Collapsible:	Yes
Counter top:	Beech / Black / White
Graphic attachment:	Infill panels (for 3-5mm substrate - optional extra) Hook and loop if fixing onto fabric panels
Shelves:	1

Gear Straight	GECS-FO	📏 920 (h) x 830 (w) x 450 (d) mm
Gear Curved	GECC-FO	📏 920 (h) x 830 (w) x 525 (d) mm

Gear Edge Display Counter



Fold-able counter with stylish and practical transparent acrylic showcase area, perfect for displaying and protecting products.

Material:	Aluminium, MDF tabletop/base, acrylic shelf
Assembly:	Fold-able (standard), Allen key if graphics change
Collapsible:	Yes
Counter top:	Transparent
Graphic attachment:	Infill panels (for 3-5mm substrate - optional extra) Hook and loop if fixing onto fabric panels
Shelves:	1

Gear Vitrine	GECD-FO	📏 920 (h) x 775 (w) x 405 (d) mm
--------------	---------	----------------------------------

3 colours available:



Change the graphic panel, change your offer message



Ideal for displaying products



Curved version



Storage shelving



Storage areas with sliding doors



Folds flat quickly for storage

Physique range Comet



Stylish tear drop counter, available with Design iPad* holder and 360° mount option but shown with integral literature holder. Only the freestyle option is available.

Material: MDF / Aluminium
Collapsible: No
Counter top: Beech / black / white / silver
Graphic attachment: Freestyle MDF
Bag: One carry bag - optional extra

Freestyle with graphic	PK189A	📏 1800 (h) x 1010 (w) x 655 (d) mm
------------------------	--------	------------------------------------

Accessories:

Design iPad Holder + 360° mount*	IPAD-SH-360W	📏 N/A
Carry bag	AB151	📏 N/A



iPad Holder optional extra*

Tips:

1 Choose your assembly option

Freestyle

MDF Tambour wrap counter, finished in a choice of fabric covering (See Step 3). Supports maximum load of 75kg. Graphics attach directly to fabric with hook and loop.

2 Choose the fabric type and colour

- LFB - Medici
- Gunmetal
- New grey
- Plasma red
- Black
- Esmerald green

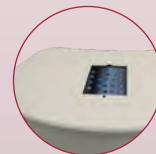
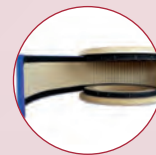
3 Choose the tabletop and base colour

Tabletop and base are available in four colours: Beech, black, silver or white.



4 Choose to accessorise with a flush mounted tabletop iPad* holder

Available for all products and suitable for iPad 2,3,4 and Air* and holder available in two colours : Black and white



Add an iPad holder to complete the look! ↗

* Please note all LCD screens, tablets and iPads are not included and not available to purchase

Tornado



Lightweight, weatherproof and durable curved outdoor or indoor promotional counter with water drainage notches. Support poles and header panel available as optional extra.

Material:	Moulded HDPE, PVC tambour
Assembly:	Push-fit - Tool-free
Collapsible:	No
Counter top:	No
Graphic attachment:	Push-in
Shelves:	No
Bag:	Two carry bags - optional extra

Tornado	PK410	📏 1040 (h) x 850 (w) x 500 (d) mm
---------	-------	-----------------------------------

Accessories:

Header and poles	PK411	📏 250 (h) x 600 (w) x 20 (d) mm
Tabletop and base bag	AB187	📏 N/A
Graphic wrap bag	AB187A	📏 N/A

Counta



Indoor white, PVC, lightweight, portable demonstrator unit which includes header panel and shelf supporting poles. Graphics can be applied as vinyl directly onto the base wrap.

Material:	PVC
Assembly:	Push-fit - Tool-free
Collapsible:	Yes
Counter top:	No
Graphic attachment:	Push-in
Shelves:	1
Bag:	One carry bag

Counta	PC607	📏 2195 (h) x 805 (w) x 450 (d) mm - Assembled
		📏 280 (h) x 680 (w) x 20 (d) mm - Header

Promotional counter, ideal for retail use



Tabletop and base bag optional extra



Graphic wrap bag optional extra



Internal storage area



Carry bag included for transportation or safe storage of your Counta

Backwalls

Our Backwall products include our Hop-up and Pop-up displays and Formulate also. They provide a simple way to create stunning backdrops, exhibition stands and displays.

They are lightweight, compact and practical, with cleverly designed systems that set up in minutes. Graphics are easily attached to a Pop-up or Formulate frame or left in place on a Hop-up.

Our range also allows for creative use of larger spaces, with linkable displays and large-scale graphics.





Choose a Backwall to create stunning visual impact.

Our Backwalls are large in stature but are also extremely portable and easy to use. Highly popular for events, commercial galleries, lounge road shows or just used as interior decoration, they are a creative backdrop for many situations.

Before choosing your backwall, ask yourself:

1. What size is the area you need to cover?
2. What shape of Backwall is required?
3. What type of print media would you like to use?
4. How often will your display need to be refreshed or re-branded?
5. Does your Backwall display need to be reconfigurable?
6. How portable does your backwall display need to be?
7. Will lighting be required for your display?
8. How will your Backwall be transported?

Our range of display Backwalls

Quick Impact / Quick+



Magnetic locking arms create an easy to use Pop-up frame structure. PVC graphics are held perfectly in position on the frame using graphic magnetic strips. Single or double-sided graphic option is available and Pop-ups can also be accessorised with lights and cases that convert to counters.

Embrace



Embrace is our Silicone Edge Graphic (SEG) Pop-up system with push-fit seamless fabric graphics, which hug a collapsible lightweight frame giving a sharp crisp image. Available in four sizes, Embrace allows you to erect a sophisticated display in minutes! Multiple frames can also be joined together to create larger seamless displays.

Hop-Up



A lightweight Hop-up frame system with locking arms. Fabric graphics fit smoothly across the framework and attach in place once the frame has been collapsed using hook and loop attachments. Hop-ups can also be accessorised with overhead lights.

Formulate



A range of standard or custom structures, manufactured from strong yet lightweight tubular aluminium, providing a simple and portable framework which can be dressed with a tensioned fabric graphic.

Modulate



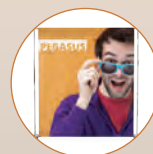
Based on the Formulate concept, Modulate is characterised by its simplicity of assembly: the structures are connected to each other by powerful magnets. In addition, this range is equipped with patented Twist and Lock feet: place, pivot and it's locked!

Xclaim



This is a simple lightweight, collapsible frame with magnetic locking arms and push-fit fabric graphics. Coming in a variety of shapes and sizes, Xclaim is designed to be portable and durable and can be set up and packed down quickly and easily.

Pegasus



This great range of adjustable tension backwalls have telescopic poles for adjusting the height and width, so they can fit all spaces and graphic sizes. Composed of lightweight aluminium tubes which the graphics slide onto.

Graphics stay in place with magnetic strips

Quick Impact Straight or Curved



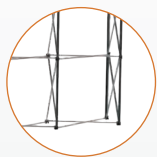
Great economic frame system backwall. Suitable for use in daily changing locations such as roadshows or in fixed spaces such as commercial galleries, showrooms or used just for interior decoration.

- Material:** Aluminium structure, plastic connectors
- Assembly:** Magnetic connectors
- Shape:** Straight or Curved
- Graphic attachment:** Mag bars, hangers and kickers
- Graphic:** Single-sided (with or without D-ends) / double-sided (optional)
- Utilisation:** Free-standing

Kit Quick Impact 3x1 Curved	IMP-3X1C	⊗ 2225 (h) x 1240 (w) x 306 (d) mm
Kit Quick Impact 3x2 Curved	IMP-3X2C	⊗ 2225 (h) x 1930 (w) x 485 (d) mm
Kit Quick Impact 3x3 Curved	IMP-3X3C	⊗ 2225 (h) x 2540 (w) x 685 (d) mm
Kit Quick Impact 3x4 Curved	IMP-3X4C	⊗ 2225 (h) x 3070 (w) x 960 (d) mm
Kit Quick Impact 3x5 Curved	IMP-3X5C	⊗ 2225 (h) x 3430 (w) x 1225 (d) mm
Kit Quick Impact 3x1 Straight	IMP-3X1S	⊗ 2225 (h) x 1240 (w) x 306 (d) mm
Kit Quick Impact 3x2 Straight	IMP-3X2S	⊗ 2225 (h) x 1970 (w) x 306 (d) mm
Kit Quick Impact 3x3 Straight	IMP-3X3S	⊗ 2225 (h) x 2700 (w) x 306 (d) mm
Kit Quick Impact 3x4 Straight	IMP-3X4S	⊗ 2225 (h) x 3435 (w) x 306 (d) mm
Kit Quick Impact 3x5 Straight	IMP-3X5S	⊗ 2225 (h) x 4160 (w) x 306 (d) mm



Available in curved or straight



Aluminium frame system



Magnetic connectors



Self-locating 'smart' magnetic locking arms



Magnetic bars



structure with magnetic locking

Quick Impact Bundle

Quick Impact Kit



Carry bag



Straight or curved frame system



Hangers, kickers and mag bars



1x roll of self-adhesive magnetic tape



Zenith transit case



Thermoformed table top in beech



2x PS950-1000 LED light

Quick+ Straight or Curved

Available in custom sizes



Premium full magnetic system backwall with self-locating 'smart' magnetic locking arms and adjustable magnetic hanger fittings. Custom sizes on request.

- Material:** Aluminium structure, plastic connectors
- Assembly:** Magnetic connectors
- Shape:** Straight or Curved
- Graphic attachment:** Mag bars, hangers and kickers
- Graphic:** Single-sided (with or without D-ends) / double-sided (optional)
- Utilisation:** Free-standing

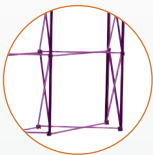
Kit Quick+ 3x1 Curved	WH221-C-CA	⊗ 2225 (h) x 1240 (w) x 306 (d) mm
Kit Quick+ 3x2 Curved	WH222-C-CA	⊗ 2225 (h) x 1930 (w) x 485 (d) mm
Kit Quick+ 3x3 Curved	WH223-C-CA	⊗ 2225 (h) x 2540 (w) x 685 (d) mm
Kit Quick+ 3x4 Curved	WH224-C-CA	⊗ 2225 (h) x 3070 (w) x 960 (d) mm
Kit Quick+ 3x5 Curved	WH225-C-CA	⊗ 2225 (h) x 3430 (w) x 1225 (d) mm
Kit Quick+ 3x1 Straight	WH221-S-CA	⊗ 2225 (h) x 1240 (w) x 306 (d) mm
Kit Quick+ 3x2 Straight	WH222-S-CA	⊗ 2225 (h) x 1970 (w) x 306 (d) mm
Kit Quick+ 3x3 Straight	WH223-S-CA	⊗ 2225 (h) x 2700 (w) x 306 (d) mm
Kit Quick+ 3x4 Straight	WH224-S-CA	⊗ 2225 (h) x 3435 (w) x 306 (d) mm
Kit Quick+ 3x5 Straight	WH225-S-CA	⊗ 2225 (h) x 4160 (w) x 306 (d) mm



Available in straight or curved



Structure with adjustable feet



Purple aluminium structure



Magnetic connectors



Hook and magnet attachment of the hanger



Square end magnetic bars



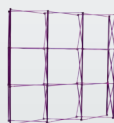
Lights fit directly on to the frame system.

Quick+ Bundle

Quick+ Kit



Carry bag



Straight or curved frame system



Hangers, kickers and mag bars



1x roll of self-adhesive magnetic tape



Zenith transit case



Thermoformed table top in beech



2x PS950-1000 LED light

Quick+ Tower



360°

Get your message noticed 360° with a Quick Tower Pop-up. At almost 3m* in height and with the option to accessorise with lighting it makes a great impact in a small space.

- Material:** Aluminium structure, magnetic connectors
- Assembly:** Magnetic connectors
- Shape:** Round
- Graphic attachment:** Mag bars, hangers and kickers
- Graphic:** 360°
- Utilisation:** Free-standing

3 quads (h)	WH231A-C	⊗ 2255 (h) x 640 (Ø) mm
4 quads (h)	WH232A-C	⊗ 2985 (h) x 640 (Ø) mm



Make your tower light up with optional PS1200 fluorescent tubes



Self-attracting, easy to hook in magnetic top graphics



Magnetic connectors

Accessorise your Impact / Quick backwalls

Increase the visual impact of your stands with our accessories



Pop-up Stabilising feet ES505
Recommended for straight Pop-up systems where internal or external loadbearing shelving is used



Pop-up Fabric
Hard wearing fabric panels, ideal for big-impact notice boards. Use plain or add graphics using hook fastenings. See page 118 for colour choices.



LCD Screen Bracket* PUSMK1
Add audio visual to your stand using an LCD screen bracket*, (supports screens up to 540mm or 5kg)



Pop-up Shelving ES514-A= Curved ES514-002 = Straight



Internal Shelf ES511X-C = Curved acrylic ES511-S = Straight acrylic
Supports up to 10 kg. Recommended with optional stabilising feet.



Pop-up Shelving Aperture Infill Panel ES512 - Curved ES513 - Straight



Fluorescent Tube PS1200
Light up your backwall with a linkable 20 watt fluorescent lighting and Linking cable (US601B)

*Please note that screens are not included and are not available for purchase.



Embrace Eco



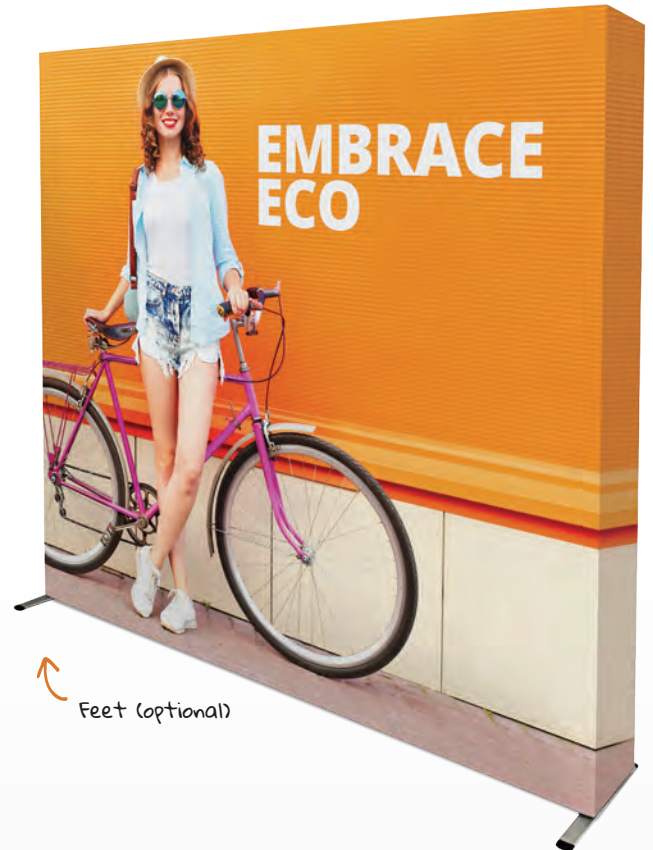
Economical solution combining the practicality of a frame system stand and tension fabric graphics attached with silicone edged gaskets (SEG).

- Material:** Aluminium structure, plastic connectors
- Assembly:** Locking by clips, interlocking frame sections
- Graphic attachment:** SEG 3 mm
- Shape:** Straight
- Graphic:** Single-sided (with or without returns) or double-sided (optional)
- Utilisation:** Free-standing

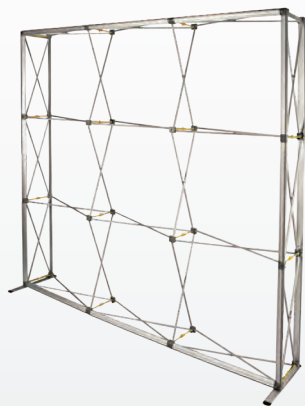
Embrace Eco 3x2	EMB-ECO-3X2	⊗ 2245 (h) x 1510 (w) x 344 (d) mm
Embrace Eco 3x3	EMB-ECO-3X3	⊗ 2245 (h) x 2245 (w) x 344 (d) mm
Embrace Eco 3x4	EMB-ECO-3X4	⊗ 2245 (h) x 2980 (w) x 344 (d) mm

Accessories:

Feet (pair)	EMB-ECO-FOOT	⊗ 8 (h) x 557 (w) x 43 (d) mm
-------------	--------------	-------------------------------



Feet (optional)



Compact frame structure



Frame system structure



Simple push-fit connections



Lock together with clips




Channel bars for push-fit SEG tension fabric graphics



Metal latch to secure the foot



Padded carry bag with pockets

Premium LED display system* 



Impressive tall backwall

Optional stabilising feet

Bag included (wheeled except 3xl and 4xl)



Embrace+



Premium LED backlit double-sided display system with SEG tension fabric graphics. Perfect for exhibition environments to make a real impact. Make larger or shaped backwalls by clamping structures together or at right angles.

Material:	Aluminium structure, plastic connectors
Assembly:	Locking by clips, interlocking frame sections
Graphic attachment:	SEG 3 mm
Shape:	Straight
Graphic:	Single-sided (with or without returns) or double-sided (optional)
Utilisation:	Free-standing

Embrace+ 3X1	EMB-PL-3X1-S	⊙, 2255 (h) x 774 (w) x 366 (d) mm
Embrace+ 3X2	EMB-PL-3X2-S	⊙, 2255 (h) x 1508 (w) x 366 (d) mm
Embrace+ 3X3	EMB-PL-3X3-S	⊙, 2255 (h) x 2242 (w) x 366 (d) mm
Embrace+ 3X4	EMB-PL-3X4-S	⊙, 2255 (h) x 2974 (w) x 366 (d) mm
Embrace+ 4X1	EMB-PL-4X1-S	⊙, 2990 (h) x 774 (w) x 366 (d) mm
Embrace+ 4X2	EMB-PL-4X2-S	⊙, 2990 (h) x 1508 (w) x 366 (d) mm
Embrace+ 4X3	EMB-PL-4X3-S	⊙, 2990 (h) x 2242 (w) x 366 (d) mm
Embrace+ 4X4	EMB-PL-4X4-S	⊙, 2990 (h) x 2974 (w) x 366 (d) mm

Accessories:

Pieds (la paire)	EMB-PL-FEET-W	⊙, 735 x 60 mm
------------------	---------------	----------------

*Please note that screens are not included and are not available for purchase.



Bungeed sections



Lock together with clips



Height adjustable



Channel on frame for push-fit SEG tension fabric graphics



Easy hook on LED curtains



Optional aperture infill shelf and spot light

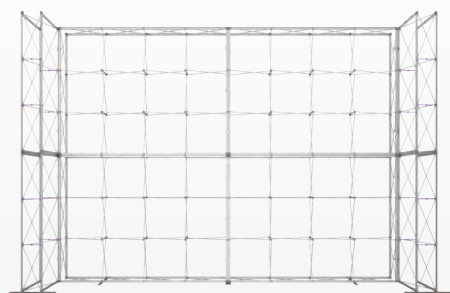


Optional external shelving 5kg max



Optional screen holder*

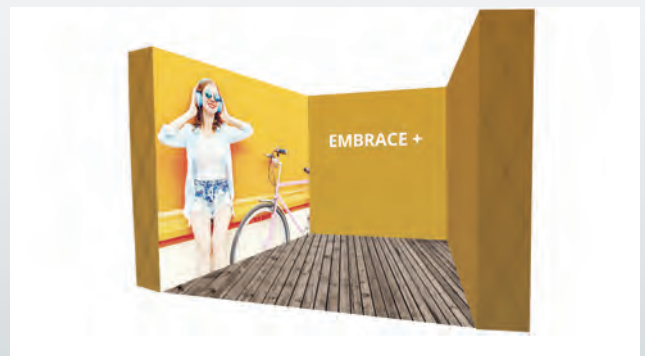
Different configurations are possible by superimposing and/or juxtaposing the structures



Accessorise with optional shelves or screen-holder*



Optional internal aperture infill panel shelving



Hop-up Impact Straight



Popular frame system that's quick to install with optional tension fabric graphics that stays on the frame structure once packed and folded. Also available in custom sizes.

Material:	Aluminium structure, plastic connectors
Assembly:	Lock together with clips
Shape:	Straight
Graphic attachment:	Hook and loop
Graphic:	Single-sided (with or without returns) or double-sided (optional)
Utilisation:	Free-standing

3x1 quads	HUI3X1	⊖ 2260 (h) x 790 (w) x 295 (d) mm
3x2 quads	HUI3X2	⊖ 2260 (h) x 1525 (w) x 295 (d) mm
3x3 quads	HUI3X3	⊖ 2260 (h) x 2260 (w) x 295 (d) mm
3x4 quads	HUI3X4	⊖ 2260 (h) x 2995 (w) x 295 (d) mm
3x5 quads	HUI3X5	⊖ 2260 (h) x 3730 (w) x 295 (d) mm

Accessories:

Stabilising feet (pair)	E5508	⊖ N/A
-------------------------	-------	-------



Easily to transport



Plastic connectors
E5500D



Graphics affix with
hook and loop



Wheeled bag



Custom sizes
available

Assembles in
two minutes!



Hop-up Impact Curved



Curved frame system and optional fabric graphics. Quick and simple to deploy. Compact and lightweight to transport or store.

Material:	Aluminium structure, plastic connectors
Assembly:	Lock together with clips
Shape:	Curved
Graphic attachment:	Hook and loop
Graphic:	Single-sided (with or without returns)
Utilisation:	Free-standing

3x3 quads	HOP-2-3X3-C	⊖ 2270 (h) x 2310 (w) x 570 (d) mm
3x4 quads	HOP-2-3X4-C	⊖ 2270 (h) x 2950 (w) x 810 (d) mm



Easy to transport



Plastic connectors



Graphics affix with
hook and loop

Xclaim

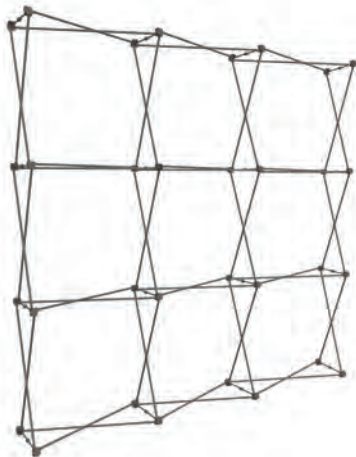


One hardware structure with many fabric graphic configurations! Combine different fabric graphic sizes and shapes to create original displays and effects.

- Material:** Aluminium structure, plastic connectors
- Assembly:** Magnetic connectors
- Shape:** Straight
- Graphic attachment:** Push-fit
- Graphic:** Single-sided or double-sided
- Utilisation:** Free-standing

3x3 quads	XCLM-3X3	Ⓞ 2250 (h) x 2250 (w) x 315 (d) mm
Shape cross	XCLM-5QP	Ⓞ 2130 (h) x 2130 (w) x 315 (d) mm

Interchangeable graphics



Easily collapsible frame system, quick to deploy and pack away



Magnetic connectors



Fabric graphics attach using push-fit points

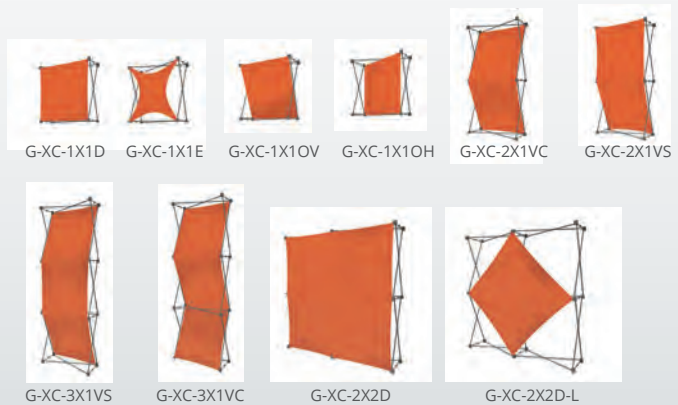


Attach multiple graphic panels to each push-fit point



Keep displays fresh by varying configurations

The shape and size of the graphics can be re-arranged or changed for a new style.



Formulate

When display formats become common place and no longer stand out then choose something with innovative shapes ...

The Formulate range offers a variety of great shapes with clean lines, ideal for creating picture backwalls or defining areas in rooms by screening or zoning.

The double-sided tension fabric graphics perfectly contour the shaped aluminium structures and maximize your brand message.

Formulate structures as well as being versatile, are also multifunctional when accessorised with LED lighting, iPad holders, shelving and leaflet holders.



Push-fit button connections on bungeed aluminium tubing



Numbered tubes for easy assembly



Zip close at base



Optional LED lighting available



Padded carry bag included



Gloves included to keep your graphics clean during assembly

Formulate Straight



Material:	Aluminium tubing
Tube diameter:	30 mm
Assembly:	Push-fit button
Shape:	Straight
Graphic attachment:	Zippered
Graphic:	Double-sided
Utilisation:	Free-standing with feet (included)

2400 mm	FORM-STR-24	⊗ 2380 (h) x 2350 (w) x 400 (d) mm
3000 mm	FORM-STR-30	⊗ 2380 (h) x 2950 (w) x 400 (d) mm
4000 mm	FORM-STR-40	⊗ 2380 (h) x 3950 (w) x 400 (d) mm
5000 mm	FORM-STR-50	⊗ 2380 (h) x 4950 (w) x 400 (d) mm
6000 mm	FORM-STR-60	⊗ 2380 (h) x 5950 (w) x 400 (d) mm



Optional LED lighting available 80 Watt



Additional new sizes



Perfect to create backwalls or to delimit your spaces



Formulate Vertical Curved



Material:	Aluminium tubing
Tube diameter:	30 mm
Assembly:	Push-fit button
Shape:	Vertical Curved
Graphic attachment:	Zipped
Graphic:	Double-sided
Utilisation:	Free-standing with feet (included)

2400 mm	FORM-VCU-24	📏 2380 (h) x 2350 (w) x 608 (d) mm
3000 mm	FORM-VCU-30	📏 2380 (h) x 2950 (w) x 608 (d) mm

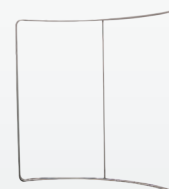


Formulate Horizontal Curved



Material:	Aluminium tubing
Tube diameter:	30 mm
Assembly:	Push-fit button
Shape:	Horizontal Curved
Graphic attachment:	Zipped
Graphic:	Double-sided
Utilisation:	Free-standing

2400 mm	FORM-CUR-24	📏 2380 (h) x 2350 (w) x 500 (d) mm
3000 mm	FORM-CUR-30	📏 2380 (h) x 2950 (w) x 500 (d) mm
6000 mm	FORM-CUR-60	📏 2380 (h) x 5950 (w) x 900 (d) mm



Up to 6m wide



Formulate Serpentine



Material:	Aluminium tubing
Tube diameter:	30 mm
Assembly:	Push-fit button
Shape:	Wave
Graphic attachment:	Zipped
Graphic:	Double-sided
Utilisation:	Free-standing with feet (included)

2400 mm	FORM-SER-24	📏 2380 (h) x 2350 (w) x 608 (d) mm
3000 mm	FORM-SER-30	📏 2380 (h) x 2950 (w) x 608 (d) mm



Ideal shape for dividing large spaces



Formulate Meeting Pod



Material:	Aluminium tubing
Tube diameter:	30 mm
Assembly:	Push-fit button
Shape:	Curved
Graphic attachment:	Zipped
Graphic:	Double-sided
Utilisation:	Free-standing

Meeting Pod	FORM-MPOD-01	📏 2100 (h) x 2900 (w) x 2550 (d) mm
-------------	--------------	-------------------------------------



Create a private break-away area



Formulate Arch



Material:	Aluminium tubing
Tube diameter:	30 mm
Assembly:	Push-fit button
Shape:	Arch
Graphic attachment:	Zipped
Graphic:	Double-sided
Utilisation:	Free-standing

Arch	FORM-ARCH-01	📏 3000 (h) x 4000 (w) x 900 (d) mm
------	--------------	------------------------------------



Optional extra header graphic





Based on the Formulate concept, Modulate is composed of a set of 15 frames made from aluminium tubes and covered with a printed textile graphics. These frames can be easily connected to each other using powerful magnets (patented MagLink system) placed inside each structure.

Based on this simple magnetic principle, it is possible to combine the various Modulate frames to create configurations for all types of communication environments: at points of sale, trade fairs, exhibition areas, in shopping centres or simply within companies themselves.

Each Modulate can then be configured as required:

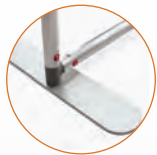
- Two available heights: 2m and 2.4m.
- Rounded corners included and Straights corners optional
- Stabilizing feet included and half feet optional



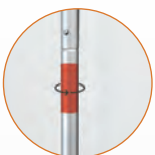
Optional 400 mm extension to change the height of the structure



Double-sided tension fabric, zip system



2 stabilising feet with Twist & Lock supplied with each frame

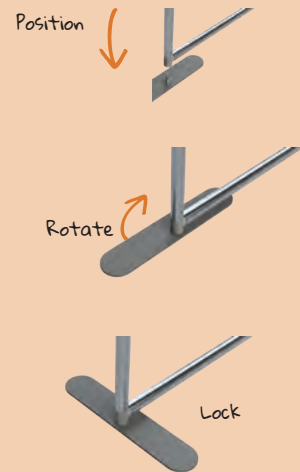


360° MagLink connector in each pole



Simply position your frames at your desired angle

How to install Twist & Lock Feet ?



Mix and Match: assemble endlessly and without tools



Infinite and original configuration solutions
100% Modular

Modulate Straight 400



Material:	Aluminium tubes
Tube diameter:	30 mm
Assembly:	Push-fit button
Shape:	Straight
Graphic attachment:	Zipped
Graphic:	Double-sided
Utilisation:	Free-standing with feet (included)



Straight 420 rounded corners	MOD-S-420	⊗ 2000 (h) x 418 (w) x 400 (d) mm
Straight 424 rounded corners	MOD-S-424	⊗ 2400 (h) x 418 (w) x 400 (d) mm
Straight 420 right angles	MOD-S-420-SQ	⊗ 2000 (h) x 418 (w) x 400 (d) mm
Straight 424 right angles	MOD-S-424-SQ	⊗ 2400 (h) x 418 (w) x 400 (d) mm



Modulate Straight 800



Material:	Aluminium tubes
Tube diameter:	30 mm
Assembly:	Push-fit button
Shape:	Straight
Graphic attachment:	Zipped
Graphic:	Double-sided
Utilisation:	Free-standing with feet (included)



Straight 810 rounded corners	MOD-S-810	⊗ 1000 (h) x 818 (w) x 400 (d) mm
Straight 820 rounded corners	MOD-S-820	⊗ 2000 (h) x 818 (w) x 400 (d) mm
Straight 824 rounded corners	MOD-S-824	⊗ 2400 (h) x 818 (w) x 400 (d) mm
Straight 810 right angles	MOD-S-810-SQ	⊗ 1000 (h) x 818 (w) x 400 (d) mm
Straight 820 right angles	MOD-S-820-SQ	⊗ 2000 (h) x 818 (w) x 400 (d) mm
Straight 824 right angles	MOD-S-824-SQ	⊗ 2400 (h) x 818 (w) x 400 (d) mm



Ideal to delimit a space

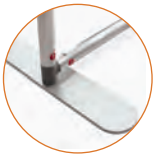


Modulate Straight 1000



- Material:** Aluminium tubes
- Tube diameter:** 30 mm
- Assembly:** Push-fit button
- Shape:** Straight
- Graphic attachment:** Zipped
- Graphic:** Double-sided
- Utilisation:** Free-standing with feet (included)

Straight 1020 rounded corners	MOD-S-1020	⊗ 2000 (h) x 1018 (w) x 400 (d) mm
Straight 1024 rounded corners	MOD-S-1024	⊗ 2400 (h) x 1018 (w) x 400 (d) mm
Straight 1020 right angles	MOD-S-1020-SQ	⊗ 2000 (h) x 1018 (w) x 400 (d) mm
Straight 1024 right angles	MOD-S-1024-SQ	⊗ 2400 (h) x 1018 (w) x 400 (d) mm



2 stabilising feet with Twist & Lock supplied with each frame



Simply assembly with numbered frame parts

Modulate Straight 1800



- Material:** Aluminium tubes
- Tube diameter:** 30 mm
- Assembly:** Push-fit button
- Shape:** Straight
- Graphic attachment:** Zipped
- Graphic:** Double-sided
- Utilisation:** Free-standing with feet (included)

Straight 1820 rounded corners	MOD-S-1820	⊗ 2000 (h) x 1818 (w) x 400 (d) mm
Straight 1824 rounded corners	MOD-S-1824	⊗ 2400 (h) x 1818 (w) x 400 (d) mm
Straight 1820 right angles	MOD-S-1820-SQ	⊗ 2000 (h) x 1818 (w) x 400 (d) mm
Straight 1824 right angles	MOD-S-1824-SQ	⊗ 2400 (h) x 1818 (w) x 400 (d) mm





Modulate Straight 2000



Material:	Aluminium tubes
Tube diameter:	30 mm
Assembly:	Push-fit button
Shape:	Straight
Graphic attachment:	Zipped
Graphic:	Double-sided
Utilisation:	Free-standing with feet (included)

Straight 2020 rounded corners	MOD-S-2020	⊗ 2000 (h) x 2018 (w) x 400 (d) mm
Straight 2024 rounded corners	MOD-S-2024	⊗ 2400 (h) x 2018 (w) x 400 (d) mm
Straight 2020 right angles	MOD-S-2020-SQ	⊗ 2000 (h) x 2018 (w) x 400 (d) mm
Straight 2024 right angles	MOD-S-2024-SQ	⊗ 2400 (h) x 2018 (w) x 400 (d) mm

For 2 meters wide backwalls



Modulate Curved 800



Material:	Aluminium tubes
Tube diameter:	30 mm
Assembly:	Push-fit button
Shape:	Curved
Graphic attachment:	Zipped
Graphic:	Double-sided
Utilisation:	Free-standing with feet (included)

Curved 820 rounded corners	MOD-C-820	⊗ 2000 (h) x 818 (w) x 400 (d) mm
Curved 824 rounded corners	MOD-C-824	⊗ 2400 (h) x 818 (w) x 400 (d) mm
Curved 820 right angles	MOD-C-820-SQ	⊗ 2000 (h) x 818 (w) x 400 (d) mm
Curved 824 right angles	MOD-C-824-SQ	⊗ 2400 (h) x 818 (w) x 400 (d) mm





Opt for original shapes!



Slope 1



Material:	Aluminium tubes
Tube diameter:	30 mm
Assembly:	Push-fit button
Shape:	Straight
Graphic attachment:	Zipped
Graphic:	Double-sided
Utilisation:	Free-standing with feet (included)

Slope 1	MOD-SS-824-01	📏 2300 (h) x 818 (w) x 400 (d) mm
---------	---------------	-----------------------------------

Slope 2



Material:	Aluminium tubes
Tube diameter:	30 mm
Assembly:	Push-fit button
Shape:	Straight
Graphic attachment:	Zipped
Graphic:	Double-sided
Utilisation:	Free-standing with feet (included)

Slope 2	MOD-SS-824-02	📏 2400 (h) x 818 (w) x 400 (d) mm
---------	---------------	-----------------------------------

Formulate and Modulate Accessories

Bring more functionality to Formulate and Modulate structures by using iPadholders, shelves and leaflet holders... Our accessory system has been designed to give you the freedom to add and change items whenever you need them.

Universal clamp	FMLT158
Tube light fitting 30mm	US903
iPad Holders*	FX837
iPad Holders (white / black)	IPAD-CHU-W/B
Leaflet Holders	FX839
Leaflet Holders (DL/A5/A4)	AH5DLP/A5P/A4P
Shelves**	FX838
Shelves (Round / Triangle /Square)	LN133-R/T/S

* iPad not included, compatible with all iPad except mini and Pro. To be used with FMLT158 binding
 **screws not included



Tube light fitting



iPad Holders



Universal clamp



Leaflet Holders



Shelf available in 4 colours:



Pegasus



Telescopic poles create a large image area adjustable up to 2.5m ideal for photography displays. Extremely lightweight, it packs down into a compartmented padded bag.

- Material:** Aluminium
- Assembly:** Telescopic twist-lock poles
- Shape:** Straight
- Graphic attachment:** Pole pocket
- Graphic:** Single or double-sided
- Utilisation:** Free-standing with feet (included)

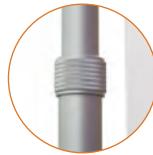
Pegasus	UB165-S	📏 1000-2515 (h) x 1429-2540 (w) x 442 (d) mm
---------	---------	--



Simple and quick to install



Poles slide into graphic pole pocket



Telescopic twist-lock poles

Excellent value



Pegasus 3 m



Our widest telescopic backwall at almost 3m offers maximum graphic impact. Lightweight, ultra-portable and simple tool free assembly.

- Material:** Aluminium
- Assembly:** Telescopic twist-lock poles
- Shape:** Straight
- Graphic attachment:** Panel pocket
- Graphic:** Single or double-sided
- Utilisation:** Free-standing with feet (included)

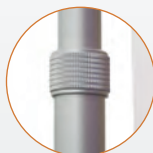
Pegasus 3 m	UB167	📏 1835-2610 (h) x 1845-3180 (w) x 440 (d) mm
-------------	-------	--

Accessories:

Extension Kit	UB167S-01	📏 1835-2610 (h) x 1845-3180 (w) x 440 (d) mm
---------------	-----------	--



Simple and quick to install



Telescopic twist-lock poles



Extension Kit

Partition an area with optional communication



Use the extension kit to create longer walls or a corner image wall



Extension Kit

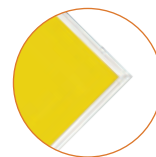


Pegasus 3m

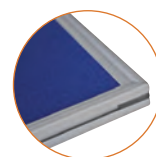


Baseline Range

Panel kits form a classic range of practical, durable and reconfigurable backwall display solutions. With a range of different finishes and media fabrics to choose from you can customise your display to match your surroundings perfectly.



Baseline Aluminium
(Thickness 18,2mm)



Baseline PVC
(Thickness 18,2mm)

Please note: our panels are guaranteed for use with hook and loop male and female tapes, these are provided by us and designed specifically for this use. We can not guarantee the panels if used with another hook and loop brand.

Baseline Panel and Pole Kits



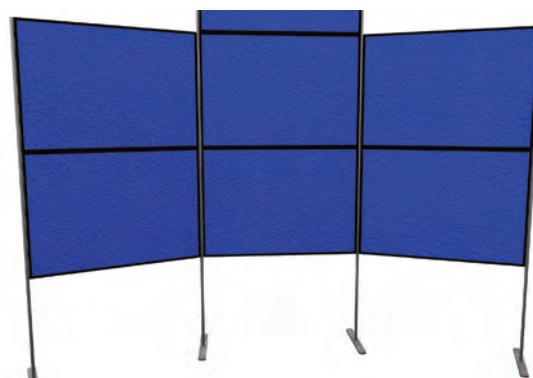
Panel and pole kits* are easy to assemble and are reconfigurable and re-positionable. Available in two panel heights, stabilising feet are included. Manufactured to order.

Material:	Aluminium
Frame:	Grey / Black
Finishes:	Baseline / Baseline Aluminium
Graphic attachment:	Hook fixing
Recommended media:	Felt coating * or optional Rigid replacement printed panels (3mm)
Graphic:	Single or double-sided
Utilisation:	Free-standing with stabilising feet (included)

Kit 4 - Baseline	KK104	⊙ 600 (h) x 900 (w) mm
Kit 4 - Aluminium	KK104A	⊙ 600 (h) x 900 (w) mm
Kit 6 - Baseline	KK106	⊙ 600 (h) x 900 (w) mm
Kit 6 - Aluminium	KK106A	⊙ 600 (h) x 900 (w) mm
Kit 8 - Baseline	KK108	⊙ 600 (h) x 900 (w) mm
Kit 8 - Aluminium	KK108A	⊙ 600 (h) x 900 (w) mm
Kit 10 - Baseline	KK110	⊙ 600 (h) x 900 (w) mm

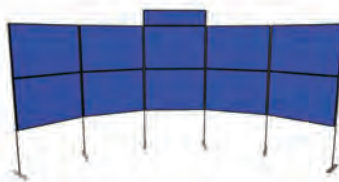
Accessories:		
Circular feet black / grey	LB913B-C/S-C	⊙ N/A
Header panel	Call us	⊙ N/A

Each panel can be assembled horizontally or vertically



6 Panel and Pole Kit

Reconfigurable and scalable solution



10 Panel Kit

(header panel optional extra)



8 Panel Kit

Baseline Jumbo Panel Kits



Free-standing folding panel kit* with hinges to create a screen or office partition. Manufactured to order.

Material:	PVC / Aluminium
Frame:	Grey / black
Finishes:	Baseline Aluminium
Graphic attachment:	Felt covered corrugated board
Recommended media:	Felt coating * or optional Rigid replacement printed panels (3mm)
Graphic:	Single or double-sided
Utilisation:	Free-standing

Kit 3 - Aluminium	KK350A	⊙ 1800 (h) x 900 (w) mm
Kit 4 - Aluminium	KK351A	⊙ 1800 (h) x 900 (w) mm



Baseline Panel Kits



Free-standing hinged panel kit. Position panels in multiple ways. Available in two panel heights. Manufactured to order.

Material: Aluminium
Frame: Grey / Black
Finishes: Baseline / Baseline Aluminium
Graphic attachment: Hook fixing
Recommended media: Felt coating * or optional Rigid replacement printed panels (3mm)
Graphic: Single or double-sided
Utilisation: Free-standing

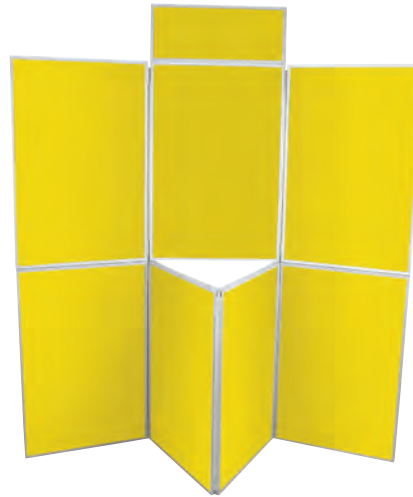
Kit 6 - Baseline	KK117	⊗ 900 (h) x 600 (w) mm
Kit 6 - Aluminium	KK117A	⊗ 900 (h) x 600 (w) mm
Kit 7 - Baseline	KK114	⊗ 900 (h) x 600 (w) mm
Kit 7 - Aluminium	KK114A	⊗ 900 (h) x 600 (w) mm
Kit 8 - Baseline	KK120	⊗ 900 (h) x 600 (w) mm
Kit 8 - Aluminium	KK120A	⊗ 900 (h) x 600 (w) mm
Kit 10 - Baseline	KK124	⊗ 900 (h) x 600 (w) mm



8 Panel Folding Kit + 2 Headers



6 Panel Folding Kit + 1 Header



7 Panel Folding Kit



PS050-LED lighting can be fitted

Baseline Tabletop Panel kit



Folding panel kit* ideally sized for tabletops. Whiteboard coating optional on request. Manufactured to order.

Material: PVC / Aluminium
Frame: Grey / Black
Finishes: Baseline / Baseline Aluminium
Graphic attachment: Hook fixing
Recommended media: Felt coating * or optional Rigid replacement printed panels (3mm)
Graphic: Single or double-sided
Utilisation: Free-standing

Kit Junior - Baseline	KK102	⊗ Centre: 600 (h) x 900 (w) mm Side: 600 (h) x 450 (w) mm Header: 250 (h) x 900 (w) mm
Kit Junior - Baseline Aluminium	KK102A	
Kit Senior - Baseline	KK103	⊗ Centre: 900 (h) x 600 (w) mm Side: 900 (h) x 450 (w) mm Header: 250 (h) x 600 (w) mm
Kit Senior - Baseline Aluminium	KK103A	



Kit Junior



Kit Senior



Delivered with carry bag

Accessories

To complete your Display solutions, discover a wide range of accessories.

The document holders available in a wide range of materials and finishes will display your documentation in a way that will be noticed and consulted. Our various bags and cases will protect your structures, whatever their size! Finally, our full range of lighting includes neon lights and LED spotlights to highlight items you wish to highlight.



Double-sided



Ultra compact



Automatically locks in open or folded position



Quantum



Perfect combination of classic design with a stylish look. Literature can be left in tray when unit is folded flat.

Material:	ABS plastic (trays), powder coated steel (arms/base)
Colour:	Smoked grey
Documents sizes:	A4
Pockets:	5
Double-sided:	Yes
Transport:	Foamed premium bag (included)

Quantum A4	AS316-001	📏 1320 (h) x 285 (w) x 380 (d) mm
------------	-----------	-----------------------------------

Cascade



Robust and lightweight model. The one-step cantilever assembly makes it collapsible for easy transportation.

Material:	Polymer, polycarbonate
Colour:	Grey
Documents sizes:	A4
Pockets:	4
Double-sided:	No
Transport :	Premium fabric bag (included)

Cascade A4	AS320	📏 1480 (h) x 265 (w) x 310 (d) mm
------------	-------	-----------------------------------

Portable, lightweight and easy to use



Zed-Up Lite



Popular range of aluminium literature stands that are stylish and highly portable. Folds down for easy transportation in a heavy duty hard case.

Material:	Acrylic and anodised aluminium
Colour:	Grey
Documents sizes:	A5 / A4 / A3
Pockets:	6
Double-sided:	Yes
Transport :	Hard case (included)

A5 (6 pockets)	AS318-002	📏 1115 (h) x 210 (w) x 280 (d) mm
A4 (6 pockets)	AS315-002	📏 1460 (h) x 256 (w) x 370 (d) mm
A3 (6 pockets)	AS319-002	📏 1420 (h) x 470 (w) x 370 (d) mm



Safe transportation in hard case

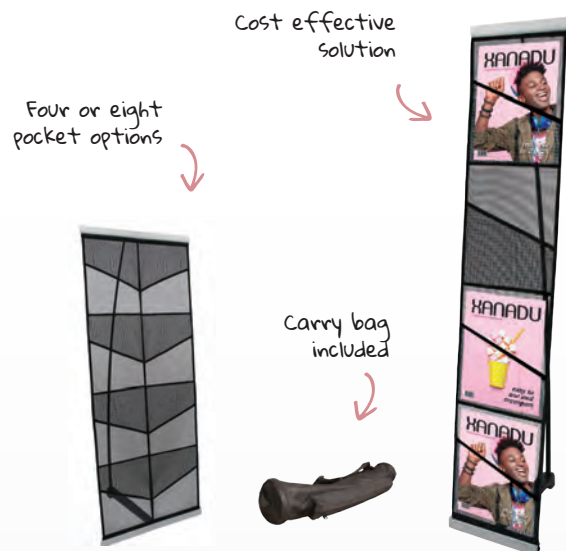
Xanadu



Basic fabric literature holder with stabilising foot and bungee pole. Great lightweight option. Three pieces construction.

Material:	Fabric, aluminium
Colour:	Black
Documents sizes:	A4
Pockets:	4 / 8
Double-sided:	No
Transport :	Fabric bag (included)

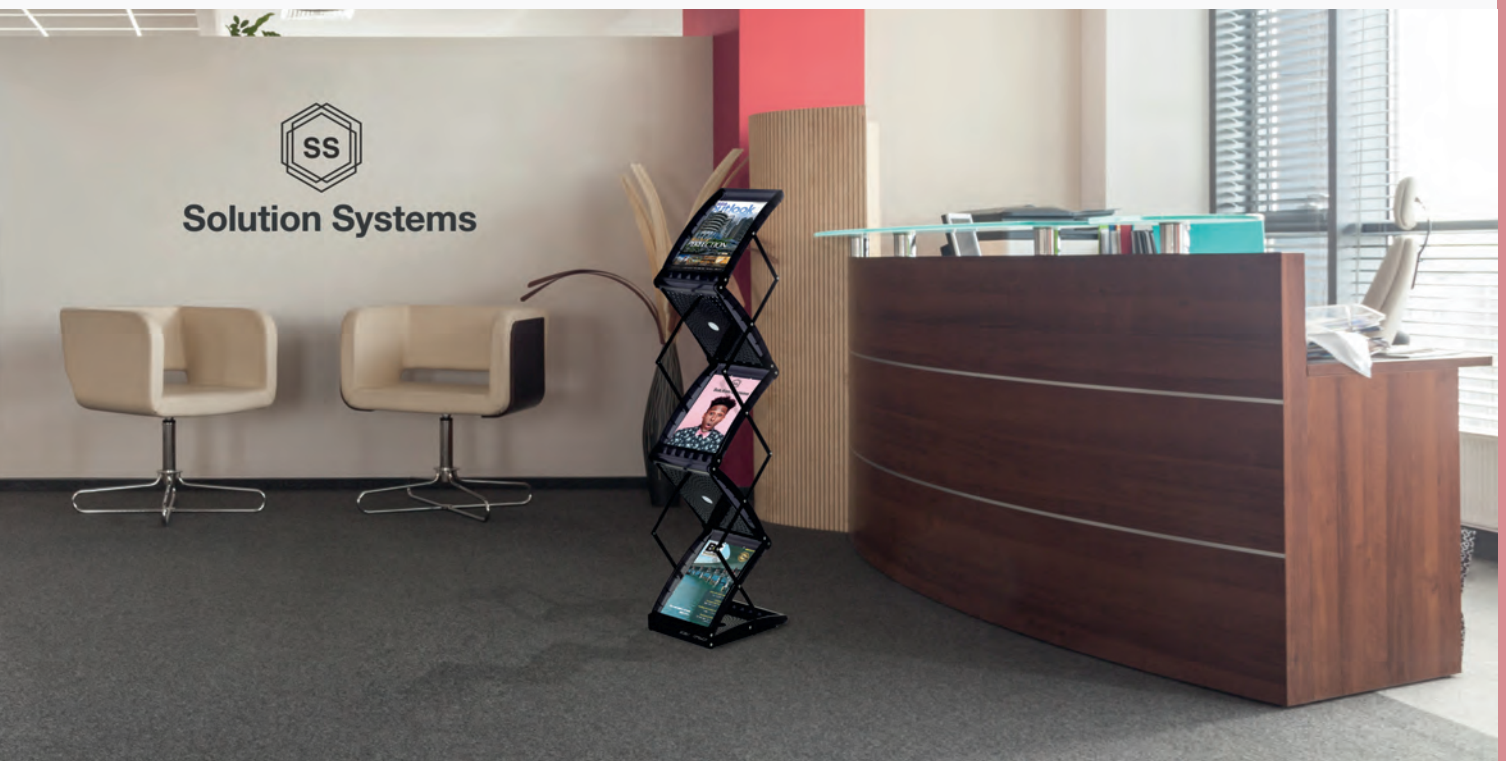
4 pockets	WH431	📏 1365 (h) x 280 (w) x 380 (d) mm
8 pockets	WH432	📏 1365 (h) x 560 (w) x 380 (d) mm



Four or eight pocket options

Cost effective solution

Carry bag included



Linear



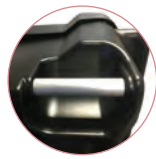
Extra strong, large moulded case for transporting Linear or Vector extrusion and kits. Optional configurable cardboard inserts for controlled storage. Complete with support straps for extra security.

Material: Medium-density polyethylene (MDPE), aluminium handles
Wheels: 2
Handle: 2
Stackable: Yes

Linear	AC506	⊗ 1300 (h) x 740 (w) x 360 (d) mm <small>(external size)</small>
Linear (No compartments)	AC506-001	⊗ 1300 (h) x 740 (w) x 360 (d) mm <small>(external size)</small>



Cardboard interior compartments



Strong aluminium handle



Option to compartmentalise the inside

Drum (Graphic)



Comes in a range of sizes to enable you to transport graphics safely and securely. Manufactured from tough, lightweight polyethylene. Available in two heights and two diameters.

Material: Polyethylene
Wheels: No
Handle: 1
Stackable: No

Drum 850 (h) mm	AC305	⊗ 850 (h) x 400 (Ø) mm
	AC306	⊗ 850 (h) x 300 (Ø) mm
Drum 1020 (h) mm	AC365	⊗ 1020 (h) x 400 (Ø) mm
	AC366	⊗ 1020 (h) x 300 (Ø) mm



Carry handle



Secure fastening

Up to 5 graphic drops

Up to 10 graphic drops



Ø 300mm



Ø 400mm

Ideal for transporting graphics

Zenith



The new height extendable tough moulded polyethylene Zenith standard and tall cases offer a multitude of features.

Versatile

Ideal ultra-portable transport solution with maximum storage for pop-ups, backwalls, roller banners and extrusions, they also double up as counters with optional extra graphic wrap and table top.

Scalable

The standard case will house a 3x5 pop-up system and graphics. The optional 100 mm high extension creates a taller configuration which can house 850mm wide roller banners.

Secure

Internal dividers to protect graphics are included and the case can be locked using padlocks (not supplied).

- Material:** Medium-density polyethylene (MDPE) / Metal
- Wheels:** 2
- Handle:** 1
- Stackable:** Yes
- Tablette:** Optional extra (Beech)
- Graphic wrap:** Optional



Zenith	AC600	956 (h) x 600 (w) x 400 (d) mm <small>(external size)</small>
--------	-------	--

Accessories :

Extension (use 2 max)	ZNTH-EXT	100 (h) x 600 (w) x 400 (d) mm
Table top (beech)	CO401-C	15 (h) x 640 (w) x 420 (d) mm



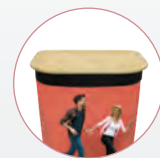
Optional extensions stack two high



Removable internal divider



Foam protected lid holds 2x LED lights



Optional graphic wrap and table top





Pop-up Frame Fabric Bag



Protect your Pop-up frame by transporting or storing in a lightweight carry bag. Takes up to 3x4 frame size. Carry handle on top of bag.

Pop-up Frame Bag	AB105	770 - 1250 (h) x 115 (Ø) mm
------------------	-------	-----------------------------



Padded Lighting Bag



Foamed lightweight fabric bag, suitable for transporting two of the following lights; PS950-1000 LED, or LED Flood / Strip / Exhibition lights. Zipped with carry handles.

Padded Lighting Bag	AB101	570 (h) x 180 (w) x 120 (d) mm
---------------------	-------	--------------------------------



Graphic Banner Tube



Lightweight fabric bag with internal cardboard tube and shoulder strap offering extra protection during transportation.

Graphic up to 850 (h) mm	AB120M	880 (h) x 155 (Ø) mm
Graphic up to 1050 (h) mm	AB120AM	1080 (h) x 155 (Ø) mm
Graphic up to 1250 (h) mm	AB120CM	1280 (h) x 155 (Ø) mm
Graphic up to 1550 (h) mm	AB120DM	1580 (h) x 155 (Ø) mm



Graphic Banner without Tube



Lightweight fabric bag without internal cardboard tube and shoulder strap offering extra protection during transportation.

Graphic up to 850 (h) mm	AB120M	880 (h) x 155 (Ø) mm
Graphic up to 1050 (h) mm	AB120AM	1080 (h) x 155 (Ø) mm
Graphic up to 1250 (h) mm	AB120CM	1280 (h) x 155 (Ø) mm
Graphic up to 1550 (h) mm	AB120DM	1580 (h) x 155 (Ø) mm



Mag Bar Bag



Keeps Pop-up mag bars safe and clean while in transit or after use in storage. Fabric bag with hook and loop locking system, complete with carry handle. Capacity to house up to 21 mag bars.

Mag Bar Bag	AB104	735 (h) x 110 (w) x 70 (d) mm
-------------	-------	-------------------------------

LED Lighting

LED technology saves energy, does not overheat and lasts longer.

- > Our LED lighting has been designed specially to adapt to display and stand solutions
- > Provide better efficiency with increased lighting at lower power consumption
- > Meets safety standards and CE certified

Measuring Light: Watts and Lumens Explained

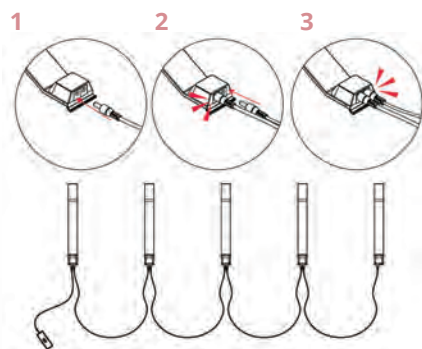
Traditionally we have measured light in watts, however watts are a measurement of power and not light output. With the emergence of new and more efficient LED technology, lumens (lm) are the preferred measurement of light.

One lumen is equivalent to the light emitted from one wax candle. For example; a traditional 40 watt light bulb has a lumen output of approximately 450lm. Our mix and match range of LED lights below have a lumen of 1200 but only use 12 watts of energy. They still give off bright white light, but use only a fraction of the energy compared to traditional halogen lights.

Perfect for illuminating larger displays

- Material:** Aluminium, plastic
- Watt output:** 80 Watt
- Watt consumption:** 12 Watt (1200 Lumens/5631 Kelvin)
- Single kit includes:** One spotlight + 2.5m linking lead
- Double kit includes:** Two spotlights + 2.5m linking lead + 1 transformer
- Linked lights:** Link up to five to one transformer
- Power lead UK & Euro:** Yes (cross head screwdriver needed)

Link up to five LED lights (maximum)



Heads swivel for perfect positioning



Ideal for modular stands



Spot LED Flood



Single Kit	LED-FLOOD-ARM-B
Double Kit	LED-FLOOD-ARM-BDLK
Transformer*	LED-ARM-TRANS

Spot LED Strip



Single Kit	LED-STRIP-ARM-B
Double Kit	LED-STRIP-ARM-BDLK
Transformer*	LED-ARM-TRANS

Spot LED Exhibition



Single Kit	LED-EXHIB-ARM-B
Double Kit	LED-EXHIB-ARM-BDLK
Transformer*	LED-ARM-TRANS

*Required when using -B code in isolation



Powerspot 50 LED



This silver clamp fixing LED has been designed to work specifically with panel systems. 360° adjustable head.

Material:	Aluminium, plastic
Watt output:	5 Watt (475 Lumens/3000 Kelvins)
Head:	360° - bras droit
Single kit includes:	One spotlight with 3m lead
Linked lights:	No
Power lead UK & Euro:	Yes (cross head screwdriver needed)

Powerspot 50 LED	PS050-LED
------------------	-----------



Powerspot 800 LED



Silver and white LED with integral bulldog clip for affixing to 16mm banner stand poles. Comes with curved arm and 180° adjustable head.

Material:	Aluminium, plastic
Watt output:	50 Watt
Head:	5 Watt (520 Lumens/5000 Kelvins)
Single kit includes:	180° - curved arm
Linked lights:	One spotlight GU10 LED bulb with 3m lead
Power lead UK & Euro:	No
Prise UK & EU:	Yes (cross head screwdriver needed)

Powerspot 800 LED	PS800-LED
-------------------	-----------



Powerspot 1200



Fluorescent clip on light suitable for illuminating Pop-up end panels with straight arm and 270° adjustable head.

Material:	Metal, plastic
Watt output:	20 Watt
Single kit includes:	One light with 2m lead
Linked lights:	Up to 6 with optional US601B connector
Power lead UK & Euro:	Yes (cross head screwdriver needed)

Powerspot 1200	PS1200
----------------	--------

Convert your UK plug into EU version



Ideal for Backwalls



Powerspot 950-1000 LED



Great black LED suitable for Pop-up systems with straight arm and 270° adjustable head.

Material:	Aluminium, plastic
Watt output:	90 Watt
Consummation:	12 Watt (1400 Lumens/5500 Kelvins)
Head:	270° - right arm
Single kit includes:	1 spot + 2.5 m lead
Double kit includes:	2 spots + 2.5 m lead + 1 transformer
Linked lights:	2 max
Power lead UK & Euro:	Yes (cross head screwdriver needed)

Single kit	PS950-1000-LED-BS
Double kit	PS950-1000-LED-BDLK

Fixing for 30mm Ø tubing



Transparent fixing that fits on to Formulate and Modulate structures that use 30mm diameter tubing for accessorising with lighting or rigid panels.

Material: Metal, plastic
Compatible: 30mm diameter tubing
Mounting: Allen key

Fixation spot/panneau pour tubes Ø 30mm	US903
---	-------



Discrete fixing



Usable to fix a panel

Recommended Fixings for Lighting

Integrated fixing						
	Universal Fixing Kit US901-C	Vector Fitting VLF	Linear Fitting US-LINEAR	Hop-up Fitting HUILF	LED Fitting for Quick+ US902-C	30mm Ø Tube Clamp US903

Utilisation compatible avec :

Lighting Model	Compatible Fixings	US901-C	VLF	US-LINEAR	HUILF	US902-C	US903
 Spot LED Flood LED-FLOOD-ARM-B	> Aero > Quick + > Embrace	> Arena > Panneaux Gear > Panneaux Baseline	> Vector	> Linear	> Hop-up > Xclaim	> Quick Impact > Quick + > Hop Up > Xclaim	> Formulate > Modulate
 Spot LED Strip LED-STRIP-ARM-B	> Aero > Quick + > Embrace	> Arena > Panneaux Gear > Panneaux Baseline	> Vector	> Linear	> Hop-up > Xclaim	> Quick Impact > Quick + > Hop Up	> Formulate > Modulate
 Spot LED Exhibition LED-EXHIB-ARM-B	> Linear > Vector						> Formulate > Modulate
 Powerspot 50 LED PS050-LED	> Panneaux Baseline						
 Powerspot 800 LED PS800-LED	> Roller banner						
 Powerspot 950-1000 LED PS950-1000-LED-BS	> Quick Impact > Embrace > Quick + (except Quick+ tower) > Hop-up > Stealth	> Arena	> Vector	> Linear			> Formulate > Modulate
 Powerspot 1200 PS1200	> Quick Impact > Quick+						

Custom and Made to Measure

To guarantee quality visuals that are adaptable for multiple uses, we have selected a wide range of print media for you.

From conception to finish, we guarantee a perfect fit and good quality vibrant printed custom graphics.

If you want a special format or finish, we invite you to contact one of our advisers for a custom-made quote.

Below are suggestions for frequently used custom graphics.



Security Barrier

Fastening by eyelets (bungee not provided)

Security Barrier 1000 (h) x 2000 (w) mm	G-SBA-10X20-PS
Security Barrier 1100 (h) x 2000 (w) mm	G-SBA-11X20-PS
Security Barrier 1100 (h) x 2200 (w) mm	G-SBA-11X22-PS
Security Barrier 1100 (h) x 2500 (w) mm	G-SBA-11X25-PS



Table Cloth with hem

Table Cloth with hem	G-CLOTH-CUSTOM-PS
----------------------	-------------------



Anti-theft security cover

Graphic cover

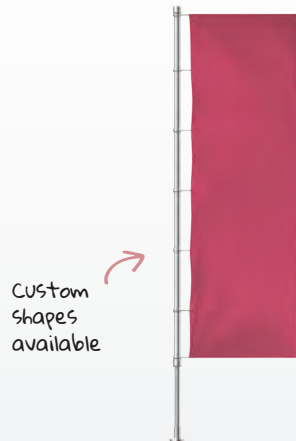
Anti-theft security cover 1500 (h) x 350 (w) x 57 (d) mm	G-ATG-15X03-PS
---	----------------



Horizontal Flag

Loop fastening with rings round

Horizontal flag 800 (h) x 1200 (w) mm	G-HCF-08X12-FK
Horizontal flag 1000 (h) x 1500 (w) mm	G-HCF-10X15-FK
Horizontal flag 1200 (h) x 1800 (w) mm	G-HCF-12X18-FK
Horizontal flag 1500 (h) x 2250 (w) mm	G-HCF-15X22-FK
Horizontal flag 2000 (h) x 3000 (w) mm	G-HCF-20X30-FK



Vertical flag

Straps and hooks fastening

Vertical flag 800 (h) x 2500 (w) mm	G-VPF-25X80-FK
Vertical flag 1000 (h) x 3000 (w) mm	G-VPF-30X10-FK
Vertical flag 1200 (h) x 4000 (w) mm	G-VPF-40X12-FK
Vertical flag 1500 (h) x 5000 (w) mm	G-VPF-50X15-FK

Other suggestions

Ask us for about other custom made graphics you require





Stands

Whatever the space to be conquered or your communication requirements, modular solutions will meet your needs. It is the best compromise between portable, economical solutions and the traditional custom built stands. No less than five ranges of modular solutions to build your project and give free rein to your imagination. Real references on the market.

For every need,
its range of modular solutions:

Modular solutions are available in 5 ranges. Each one has its own specifics and applications. They are flexible, reconfigurable and reusable structures that take the form of signs, self-supporting structures, image walls and stands.

Whether for a one-off event, a travelling project or a sustainable application for point of sale, find out below which range best suits your needs.

For more information on the complete range, please refer to the Modular catalogue.



Formulate

For invisible structures with curved and voluminous shapes



A concept that combines the spatial mastery of tubular structures with the infinite possibilities of textile printing. It is based on the shaping of 30 and 50 mm diameter aluminium tubes to create structures with innovative shapes. Like a construction set, each system includes a marking system to facilitate assembly.

This concept is used in a wide range of POS supports and stands, but also in the form of hangers to impose brands and events in three dimensions. The Formulate range also allows the creation of tailor-made solutions with original and ergonomic shapes.

Ideal for a
Retail need



Custom-made structures



Hanging signs.

More than 30 different sizes and shapes.



Stands

Vector

The ideal range for scalable stand solutions and point-of-sale fittings.



One of the simplest and most versatile communication solutions on the market. The aluminium frame system with stretched textile fabric adapts to any application: suspended, wall-mounted, self-supporting, double-sided or illuminated frames. Its mounting principle is simplified, a simple Allen key is all you need! The Vector range offers 18 modules to create stands in your image, according to your requirements and your creativity.

The offer is designed in several structures to guarantee original designs that adapt to each event: showrooms, points of sale, fairs, museums and many others. With 8 models of profiles, find the solution adapted to your needs and your budget.



Hanging signs
LED



Free-standing frames

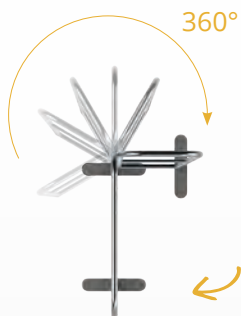


Stands: 18 modules available and a range of pre-assembled modules



Modulate

The most versatile and easy to assemble range



With the Maglink, you can easily place your frames at any angle you wish.

Inspired by the Formulate, Modulate consists of a set of 15 frames made from 30 mm diameter aluminium tubes and covered with a printed textile cover. This unique range features a double innovation. The Mag Link: an invisible magnetic system integrated into the frame's mast allowing the structures to be assembled very simply. The Twist and Lock feet: place, pivot, it's locked!

Based on this simple magnetic principle, it is possible to combine the various Modulate™ frames to create configurations for all types of communication areas: at points of sale, trade fairs, exhibition areas, in shopping centres or even within companies to partition off spaces.



Shop decoration



Reconfigurable stands, transformable into workspaces

Linear

The solution for stands with PVC visuals



The Linear range consists of 8 aluminium profiles and is intended to provide an alternative to structures with fabric cladding. The construction, based on grooved posts and reinforcing crossbars, allows you to equip your structures with flexible PVC or rigid panel graphics.

This range is perfectly suited to picture wall applications, stands and office fittings. It is composed of 5 modules in aluminium profiles which will form the basis of a solid and durable architecture, permanent or temporary.

You can easily change the size of your stand by combining the different modules.



Stands



Backwalls

Arena

In the spotlight



If your project concerns the world of scenography, events or communication, the solution is called Arena. The Arena system is a tubular stage structure made of aluminium (25 mm). These stable structures are modular and scalable. The different sections can be assembled and reused according to the needs of each project.

The Arena range offers a wide range of components (22 in total) to make our proposal more compatible with your project. Create the structure you need with simple assembly sections.

Reusable, reconfigurable and accessorizable structures



Stands and stages

Available services

On the basis of an initial design brief or detailed specifications, we design, quote and produce the stand solution that will meet your expectations.



Design 3D

Our designers offer standard and customised stand solutions as well as a wide range of accessories to support your project.



Design & Quotation

Our CAD department will advise you on the stand solution adapted to your needs and will accompany you in the completion of your project.



Pre-assembly

Production is carried out in our own workshops. You are invited to come and discover the pre-assembly of the stands before shipment.



Graphic

Our large scale printers will meet all your printing needs: textile, tarpaulin ...

Modular Solutions Catalogue

Discover the complete range of modular solutions in the Modular catalogue: creative solutions for unique stands and PVL. Available free of charge.



Ask your account manager for a copy





Local production and printing for higher quality

With our large-format printers, which benefit from the latest innovations in printing, we ensure the production of striking visuals that will highlight your message and set you apart from the competition.

To guarantee you quality visuals adapted to all uses, we have selected a wide range of printing media. Our diversity of materials enables us to meet your requirements in the shortest possible time.

In addition, a large part of our products are manufactured in Europe directly in our own production workshops. This mastery allows us to be able to control all stages of production.

Before shipment, all our visuals and structures pass through our expert hands which control the quality and good finish of each order.

Tips to ensure the best print results

The quality of your graphic depends on the quality of the print file provided. Here are some basic principles to ensure optimal results :

- Follow the graphic templates and instructions we provide to create your print files.
- Create artwork at no less than 300 dpi in CMYK mode not RGB, send any linked files do not embed and outline all text.
- Save artwork using Adobe PDF preset PDF/X-4:2010, and check box to "Create Acrobat layers from top level layers".





Index

A

Aero+	12
Arty	50
A-sign Board	36

B

Baseline Jumbo Panel Kits	91
Baseline Panel and Pole Kits	91
Baseline Panel Kits	92
Baseline Tabletop Panel Kit	92
Basic Curved Counter	64
Basic Round Counter	64
Basics Leader	57
Beijing Lite	22
Blizzar	35
Bora Column	43
Bora Tent	43
Breeze	11

C

Cascade	94
Circular Formulate sign	60
Comet Counter	71
Counta	72

D

Delta Lite	6
Deluxe Café	38
Design iPad Holder	55
Dragonfly 2	10
Drum	96

E

Economy Café	38
Edge 2	10
Element	9
Embrace+	79
Embrace + LED Counter	65
Embrace Eco	78
Excaliber 2	10

F

Formulate Arch	84
Formulate Horizontal Curved	83
Formulate Meeting Pod	84
Formulate Monolith	21
Formulate Monolith Eco	21
Formulate Monolith LED	20
Formulate Oval Table	59
Formulate Round Table	59
Formulate Serpentine	84
Formulate Snake	20
Formulate Straight	60
Formulate Universal Tablet Holder	56
Formulate Vertical Straight	83
Formulate Wave	20

G

Gala	59
Gear Edge Counter	70
Gear Edge Display Counter	70
Giant Mosquito	7
Graphic Banner Tube	98

H

Hop-up Impact Curved	80
----------------------------	----

Hop-up Impact Straight	80
Hop-up Counter	63
Horizon	35

I

Illumigo	17
----------------	----

K

Kit Vector 50 mm	15
Kit Vector 125mm LED Retail	18
Kit Vector LED 75 mm u.motion	16
Kit Vector LED 125 mm	17

L

Liberty	8
Liberty Mini	11
Lightning	23
Linear	96
Linear Media Post	56
Linear Curved Counter	69
Linear Straight Counter	69

M

Mag Bar Bag	98
Mantis	8
Merlin	4
Mistral	31
Modulate Counter	66
Modulate Curved 800	88
Modulate Straight 400	86
Modulate Straight 800	86
Modulate Straight 1000	87
Modulate Straight 1800	87
Modulate Straight 2000	88
Monsoon	39
Monsoon (wall)	39
Mosquito	7

O

Orient +	6
Original +	4

P

Padded Lighting Bag	98
Pegasus	90
Pegasus 3 m	90
Pioneer	6
Pop-up frame Fabric Bag	98
Pop-up Counter	63

Q

Quantum	94
Quick+ Straight or Curved	76
Quick+ Tower	77
Quick Impact Straight or Curved	75

R

Rainbow	40
Reception Bank Vector LED	67
Revolution	3

S

SEG Counter	65
Sentry	57

Shield	37
Shimmer	31
Slope 1	89
Slope 2	89
Spiral Display Tower	58
Spiral Plinth	58
Star Tent	41
Stealth	19
Stellar	11
Stowaway	40
Strata	48
Street Flag	32
Sunrise Round	44
Sunrise Square	44
Square Formulate sign	60

T

Telescopic Universal Tablet Holder	55
Teva	53
Thunder 2	35
Tornado	72
Trappa	57
Twista Lite	47

U

U.digital - A board	54
Uno	23

V

Vector 125 mm LED	60
Vector Counter Straight LED 125 mm	67
Vector Counter Curved	68
Vector Counter Straight	68
Vector LED 30mm Wall	52
Vector LED 75mm Wall	52
Vector LED 75 mm Mural u.motion	53
Vector Media	15
Vector Quick Fix	50
Vector Retail Kit 125 mm	18
Vector Slim Circular	51
Vortex	22

W

Wasp	9
Wedge	24
Whirlwind	36
Wind Dancer	31

X

Xanadu	95
Xclaim	81

Z

Zed-Up Lite	95
Zenith	97
Zoom+ Arch	27
Zoom Edge	29
Zoom Feather	28
Zoom Quill	29
Zoom Tent	42
Zoom Tent Eco	42

RETIO

Your Complete Visual Communication Display Guide